



DETROIT METRO  
SKATING COUNCIL

## ANNOUNCEMENT CHANGE

***“This announcement was amended on 10/27/25 with changes to the listed team maneuver elements & test level requirements.”***

**2025 - 2026 LAURA MAKI MICHIGAN HIGH SCHOOL STATE CHAMPIONSHIP ANNOUNCEMENT**  
**Michigan High School Skating/Detroit Metro Skating Council**  
[mihighschoolskating@gmail.com](mailto:mihighschoolskating@gmail.com)  
**March 21 & 22, 2026**

The 2025-2026 Laura Maki Michigan High School State Championships will be conducted in accordance with the rules and regulations of U.S. Figure Skating, as set forth in the [current rulebook](#), in compliance with the Michigan High School Athletic Association, the Michigan High School Rules and Regulations, well as any pertinent updates that have been posted on the U.S. Figure Skating [website](#).

This competition is the culmination of the Michigan High School Team Competition series, and includes an individual competition, open to all Michigan high school 2025-2026 team participants, per the high school rules and regulations and Michigan high school teams finishing either first or second in their districts.

# 2026 LAURA MAKI MICHIGAN HIGH SCHOOL STATE CHAMPIONSHIP ANNOUNCEMENT

## **Contact:**

All announcement and pertinent information will be found on the Michigan High School page at [www.sk8stuff.com](http://www.sk8stuff.com)  
Marjorie Banner – e-mail: [mihighschoolskskating@gmail.com](mailto:mihighschoolskskating@gmail.com) – ph: 248-207-0765.  
Registrar: Mary Moss – e-mail: [wyaandotteskater@msn.com](mailto:wyaandotteskater@msn.com) – ph: 313-567-8770 (8am-4:30pm); mailing address: 6565 Kolb, Allen Park, MI 48101.

## **Dates & Locations:**

March 21, 2026, Individual Events. 8am-8pm; March 22, 2026, Team Events, 8am-4pm. Novi High School FS (hosting), 42400 Nick Lidstrom Drive, Novi, MI 48375, 248-347-1010

## **Sanctioning:**

Sanctioned by US Figure Skating - Sanction #  
Hosted by the Detroit Metro Skating Council  
Chief Referee: Tamara Moores

## **Closing Dates and Entry Fees:**

State Championship Competition - \$170.00 per **Level A/High** Team, \$170.00 per **Level B/Intermediate** Team, \$170.00 per **Level C/Low** Team - \$100.00 for 1st individual event, \$50.00 for 2nd individual event. Registration for **Individual events** must be paid in full by February 13, 2026. Registration for **Team events** must be paid in full no later than February 20, 2026, **OR one week following your final district meet.** Skaters making changes to individual events will be charged \$30.00 for changes.

All entries fees are non-refundable and must be paid by check or money order payable to Detroit Metro Skating Council.  
ONE CHECK OR MONEY ORDER REQUIRED PER TEAM (no cash and no individual skater checks).  
No late entries will be accepted. A fee of \$35 will be charged for all returned checks.

## **Test Levels:**

Skaters must compete at their registered US FIGURE SKATING or ISI test level or one level higher as of November 1, 2025. Skaters must be a member of USFS to compete.

<b>US Figure Skating Freestyle or Skating Skills and ISI Test Equivalents</b>		<b>High School Test Levels:</b>
Beginner - ISI Freestyle 1 or 2	Pre-Prel - ISI Freestyle 3 & 4	Level A Team – No restrictions for Jumps, Spins, Skating Skills
Preliminary - ISI Freestyle 4, 5 & 6	Pre-Bronze - ISI Freestyle 5, 6 & 7	
Bronze - ISI Freestyle 6, 7 & 8	Pre-Silver - ISI Freestyle 7 & 8	Level B Team – Skaters must not have passed higher than Pre-Silver Singles test
Silver - ISI Freestyle 8 & 9	Pre-Gold - ISI Freestyle 9 & 10	
Gold - ISI Freestyle 10		Level C Team – Jumps & Spins: Pre-Prel FS & below. Skating Skills: Prel & below

## **Music for State Events:**

Skaters participating in individual events should email an MP3 file of their music, clearly identified with the skater's name and each event (i.e. dance, intermediate FS, etc.) to: [musicforstates@gmail.com](mailto:musicforstates@gmail.com). Subject line on the email should state "MUSIC". **Dancers should submit their own music for dance events.**

## **Team Scoring:**

Teams will receive points for each event based on the number of teams competing with the first place team receiving the highest number of points and the last place team receiving one point. Points from each event at the three regular season team competitions will be totaled to determine advancement to the State Championship. At the State Championship, points for each team/individual event will be totaled in the same manner to determine Team and Individual Team event awards.

## **Advancing to State Championships:**

The top two teams from each district will advance to the State Championship. *If any of the qualifying teams from a district withdraws, the next highest ranked team will advance to the championship.*

## **Awards:**

Championship Event – Championship medals will be awarded for each team event for overall placement. Trophies will be awarded to the First, Second and Third place teams for each level based on the accumulated point total from the team events. First, Second and Third place Championship medals will be awarded to each member of these teams. First, Second and Third place championship medals will be awarded to individuals with the highest placement for each Team Individual event. If there are run-off events, first through third placements for individual event qualifying placements earn district medals. A trophy will be awarded to the First place team with the highest Team Individual point total, at the completion of all the team events. Medals will be given to the first three places at the initial events; awards will be given after each event. Team awards will be awarded at the end of all team competitions. In team events, skaters who participate in each category and every event will be given medals.

## MHSAA 2025-2026 MICHIGAN HIGH SCHOOL FIGURE SKATING TEAM COMPETITION SERIES

### **Rules & Eligibility**

1. The competition will be conducted in accordance with the rules as stated in the current US Figure Skating 25-26 High School Skating Handbook.pdf. In addition, Michigan High School Figure Skating follows the rules of the Michigan High School Athletic Association (MHSAA). This announcement will take precedence if there is a conflict with the US Figure Skating Rulebook.
2. Each team must be registered via "Members Only" (on the USFSSA website). Certificate for proof of membership along with your application should be submitted to our registrar, Mary Moss, at the address on page 1.
3. All skaters must be members of US Figure Skating in order to qualify for competition entry and provide their membership number on attached forms.
4. Each team member must be a member in good standing with the US Figure Skating and their home club.
5. All skaters who enter **must be in at least 9th grade and be enrolled as a student in high school** as per the MHSAA Handbook, Regulation I, Section 2.
6. A team will consist of at least two skaters from one high school. All teams must have high school administrator or an Athletic Director's approval.
7. High schools may combine as per the MHSAA Handbook, Regulation I, Section 1 (F). All teams wishing to combine must complete an application form and submit it to the high school committee for approval. **No recruiting or stacking is allowed.** You will be notified if the combined team is approved. Each school that is combining must be listed on the team application form. If the proposed combined team is not from the same school district, the following rules apply: An administrator or Athletic Director from each school must sign the team entry form. All skaters from the combined schools must be allowed to skate on the team. **The high school committee reserves the right to limit the number of schools and/or skaters that may combine to form a team.**
8. Private school skaters must compete for the high school they are actually enrolled in or with an approved combined team.
9. Home-schooled skaters may compete for a high school in the district in which they are a resident. In districts with more than one high school, home-schoolers must reside in the boundaries of the high school for which they wish to compete. Proof of residency must be provided to the high school committee, along with the completed application form, signed by the Athletic Director.
10. **The high school committee will grant final approval of a team's membership.**
11. In the event there is a dispute regarding eligibility or combined team approval, decisions may be appealed. ALL appeals must be submitted in writing to the Michigan High School Committee (insert address). Decisions will be rendered as quickly as possible. In the event your appeal is denied, you may further appeal in writing to the Detroit Metro Skating Council, c/o Tamara Moores, Chair, email: [tamaravmoores@gmail.com](mailto:tamaravmoores@gmail.com), as the LOC of the sanctioned, non-qualifying high school figure skating competitions. **Decisions by the Detroit Metro Skating Council on ALL appeals "WILL BE FINAL", per USFSA rules, 3000A and 3200C.** After a final decision is made on any appeal, any non-compliant teams thereafter will be **BARRED** from taking the ice at any sanctioned Michigan High School Figure Skating competition by the Event Referee.
12. A skater will not be allowed to participate unless they have a signed Skater Entry Form on file with the Registrar at least one week prior to the first competition of the season.
13. Per the MHSAA Handbook, Regulation I, Section 9, a student that transfers from one high school to another is not immediately eligible to participate unless the student qualifies under one or more of the exceptions outlined in Section 9 (A), 1 – 15, and approved by the high school committee.
14. The competition referee has the final discretion as to whether a skater may or may not compete if the skater's health and safety are in question, due to a fall or injury.
15. Per the MHSAA Handbook, Regulation II, Section 11, no team may have organized team practices (with a coach present) outside of the competition season which officially begins **November 1<sup>st</sup>, 2025**. Teams found having organized practices outside of the season are subject to disqualification.
16. A skater may not accept prize money in any amount or merchandise having a value greater than \$25 for any skating competition.
17. Team or individual byes will not be granted for any competition including the State Championship. In the case of injury, a skater who has been a registered member on the submitted roster of an approved team, since the beginning of the season, may be eligible to compete at the State Championship with the prior approval of the high school committee, provided a written medical excuse is submitted to the high school committee.

18. The high school committee reserves the right to limit the number of entries, eliminate events due to insufficient entries, and combine or divide groups as necessary.
19. **Late entries will not be accepted. All paper work must be turned in on time. Any late entries may or may not be accepted at the discretion of the high school committee based on availability.**
20. **No skaters may be added after the November 1, 2025 deadline, except with special permission of the registrar.**
21. No event will be canceled unless there is a state of Emergency declared in the area where the rink is located, even if school districts of participating teams have closed or cancelled events. Points will be awarded based on teams participating. There will be no refunds.
22. Team banners are encouraged.
23. No outside food is allowed in the arenas.
24. Unsportsmanlike conduct & foul language will not be tolerated at any competition and is grounds for disqualification.
25. This competition is hosted by the Member Club and sanctioned by US Figure Skating (SR 3.09 and SR 4.00). The Sanction Numbers for all meets and the state competition are listed on page 5 of this document. All coaches must be in compliance with Rule 1310, MR 5.11, MR 5.12, MR 5.13 or they will not be allowed to coach athletes, nor have contact, either directly or indirectly, at a venue for practice and/or at US Figure Skating events (US Figure Skating tests, competitions, performance activities, club ice, and workshops).

## **NOTE TO ALL PARTICIPATING TEAMS:**

State Championship Events – **Each participating team at state championships MUST provide three volunteers** over the course of the two day event or they will not be allowed to participate. Notification of volunteer names and available times must be provided to the host team.

## 2025-2026 MICHIGAN HIGH SCHOOL FIGURE SKATING STATE CHAMPIONSHIPS

### *Team/State Event Rules*

1. If there are not at least two Level C/Low teams in a district, skaters will have the option to move up to Level B/Intermediate.
2. Skaters must compete at their test level or higher based on their US Figure Skating freestyle and moves-in-the-field test levels as of November 1, 2025 (**ISI level equivalency on page one**).
3. Skaters may move between levels at any given event as long as they qualify for that level. Skaters may only compete in one level for Jumps/Spins and one level for Moves at each event. In order to qualify for the State Championship, a skater must have participated at that level in at least one regular season team event.
4. All genders will skate on the same team.
5. Level High, Intermediate, and Low Teams must have a minimum of two skaters on their roster. **No skater to skate more than two elements in each discipline per level (spins, jumps, moves).**
6. Teams will be required to submit a Team Event Roster at check-in at least 10 minutes prior to the start of each team competition. All skaters on the team roster must be listed. If a skater is not participating due to absence, injury, or discipline, please indicate the reason in the notes column. Once the roster has been turned in, substitutions only under extenuating circumstances with Referee approval.
7. Only one skater per team may warm up each element.
8. Each team will be allowed one retry per team per level (A/High, B/Intermediate, C/Low) at Team Competitions. **The second attempt has to be the exact same element as the first attempt by the same skater.** The second attempt will count regardless of whether or not it was better than the first attempt. The skater will signal for a retry immediately by raising their hand. The Referee will raise their hand in return in acknowledgement of the request for a retry. **Re-skates are NOT allowed at State Championship.**
9. If a team does not have a skater eligible to perform an element, the team will receive no credit for that element.
10. If a team cannot participate at one of the district competitions, that team will receive no points for that competition.
12. There will be no tie-breaker for regular season events.
13. Any grievance of any event must be made within 15 minutes after the results of that event have been posted. Grievances must be submitted in writing only **by the grieving team coach** to the referee of the meet.

## 2025-2026 MICHIGAN HIGH SCHOOL FIGURE SKATING TEAM COMPETITION SERIES

### Team Events

#### Level A/High

This level includes all elements from 2025 USFS High level, and adds a MIHS-defined 4<sup>th</sup> element in each discipline

Jumps	Skating Skills	Spins
1 Single or double Axel	1 Spiral Sequence (as performed for Gold Skating Skills test)	1 Flying Spin (any position, no change of foot, variations permitted, min 5 revs)
2 Combination jump (double/double OR triple/double)	2 Twizzle sequence (max 3 twizzles, change of direction REQUIRED, change of foot REQUIRED, optional free foot psn, no more than 3 steps between twizzles)	2 Camel spin w/EITHER difficult entry OR difficult exit (No flying entry, no change of position)
3 Double or Triple Loop immediately preceded by connecting steps	3 Choreographic sequence (at least 2 different movements REQUIRED, pattern not restricted, see Rule 6105)	3 Combo spin (chg of foot REQUIRED, change of direction permitted, fly permitted, all 3 basic positions REQUIRED, min 2 revs per position, min 8 revs total)
4 Double or triple salchow	4 Straight line step sequence (as performed for Pre-Gold Skating Skills)	4 Forward upright spin to back upright spin (optional free foot position, min 5 revs each foot)

#### Level B/Intermediate (skaters may not have passed higher than Pre-Silver Singles test)

This level includes all elements from 2025 USFS Intermediate level, and adds a MIHS-defined 4<sup>th</sup> element in each discipline

Jumps	Skating Skills	Spins
1 Any Double jump	1 Inside Slide Chasse pattern (PreSilver SS #5)	1 Layback spin (variations permitted, min 5 revs)
2 Jump sequence consisting of 2 jumps, with single Axel as 2 <sup>nd</sup> jump (only single or double jumps, no triples)	2 Short edge element (NO change of position, NO change of edge, max 7 second hold, see Rule 8375 for acceptable elements)	2 Forward or backward camel spin (no fly, variations permitted, min 5 revs)
3 Split jump	3 Choreographic step sequence (full ice length)	3 Combo spin (at least 1 change of position, change of foot optional, may fly, min 5 revs)
4. Single flip immediately preceded by connecting steps	4 8-Step Mohawk sequence (Bronze SS #3)	4 Sit Spin (May fly, may change feet, variations permitted, min 5 revs)

#### Level C/Low (skaters may not have passed higher than Pre-Preliminary Singles or Preliminary Skating Skills)

This level combines the elements for 2025 USFS Beginner and Low levels, and adds a MIHS-defined 4<sup>th</sup> element in each discipline

Jumps	Skating Skills	Spins
1 Half flip jump OR Single flip jump	1 Basic forward spiral on a straight line (no variations) right OR left	1 Two-foot spin (min 3 revs) OR Forward upright spin (optional free foot position, min 3 revs)
2 Bunny hop or Mazurka	2 Backward one foot glides (both feet)	2 Back upright spin (no variations, min 3 revolutions)
3 Single salchow + single toe loop combination	3 Choreographic step sequence (1/2 ice length)	3 Forward sit spin (min 3 revs, variations permitted, no fly, no change of foot)
4 Waltz jump or Single loop	4 Five-step mohawk sequence (as performed on Pre-Bronze SS) OR Waltz Eight (Pre-Preliminary SS)	4 Combo spin (no fly, no change of foot, 3 basic positions must be achieved, min 2 revs in each position)

**ALL LEVELS: Spins for all levels are to be held in the basic position for the required revolutions. Features will be given value only if the required revolutions are accomplished. Combination spins must be held for required revolutions as stated.**

**At DISTRICT EVENTS, teams will have the option to use one retry per LEVEL; at STATES no retries will be permitted. If a competitor performs an element higher than that listed, that element will receive no credit (for example, if the element specified is a single Salchow and the competitor performs a double Salchow, no credit is given for the element)**

# 2025-2026 MICHIGAN HIGH SCHOOL FIGURE SKATING STATE CHAMPIONSHIPS

## Individual Events

**Music: See BELOW.**

**Eligibility:**

Skaters may not skate below their US Figure Skating test level as of November 1, 2025, but may skate up one level higher (ISI level equivalency on page one). Skaters may compete in a maximum of 2 individual events, which may be any combination of Excel, Solo Dance, and Artistic events.

SINGLES	JUDGING	1st Event Price	2nd Event Price
Excel Free Skate (Pre-Preliminary-Senior)	6.0	\$110	\$60
Well Balanced Free Skate (Intermediate-Senior)	6.0	\$110	\$60
Aspire Free Skate (Level 1-4)	6.0	\$110	\$60
SOLO DANCE	JUDGING	1st Event Price	2nd Event Price
Preliminary – Tango Canasta (2 sequences)	6.0	\$110	\$60
Pre-Bronze – ChaCha (2 sequences)	6.0	\$110	\$60
Bronze – Willow Waltz (2 sequences)	6.0	\$110	\$60
Pre-Silver – Foxtrot (2 sequences)	6.0	\$110	\$60
Silver – Tango (2 sequences)	6.0	\$110	\$60
Pre-Gold – Blues (2 sequences)	6.0	\$110	\$60
Gold – Quickstep (2 sequences)	6.0	\$110	\$60
Free Dance (Juvenile-Senior)	6.0	\$110	\$60
SHOWCASE	JUDGING	1st Event Price	2nd Event Price
Artistic Free Skate (Level A-D)	6.0	\$110	\$60
Duet Artistic Free Skate (Level A-D)	6.0	\$130	-

Program requirements for the 2025-2026 season will be used, updates can be found here:

<https://www.usfigureskating.org/competition-program-requirements>

**Skaters may not enter both Excel and Well Balanced free skate events at this competition.**

Artistic Solo & Duet Free Skate Levels are based on singles free skate test level and are as follows:

**Level A:** Aspire-Pre-Preliminary

**Level B:** Preliminary & Pre-Bronze

**Level C:** Bronze-Silver

**Level D:** Pre-Gold & Gold

**Artistic Duet** programs are to be performed by two skaters and will follow the same technical and timing requirements as the Artistic Solo events at the same level. Program requirements can be found here:

<https://www.usfigureskating.org/competition-program-requirements>, under High School Skating > High School Artistic Free Skate.

## 2025-2026 MICHIGAN HIGH SCHOOL FIGURE SKATING STATE CHAMPIONSHIPS

Registration via [www.sk8stuff.com](http://www.sk8stuff.com)

When registration goes live, coaches/team managers will be emailed log-in information.

### Music for State Championship Events:

Skaters participating in individual events should email an MP3 file of their music, including dance music, clearly identified with the skater's name and each event (i.e. intermediate FS, gold dance, etc.) to: [musicforstates@gmail.com](mailto:musicforstates@gmail.com). Subject line on the email should state, "MUSIC".

**MAXIMUM OF 2 EVENTS PER SKATER.** SKATERS MAY NOT SKATE BELOW THEIR US FIGURE SKATING OR ISI TEST LEVEL AS OF NOVEMBER 1, 2025, BUT MAY SKATE UP ONE LEVEL HIGHER (ISI LEVEL EQUIVALENCY ON PAGE ONE). SKATERS MAY COMPETE IN A MAXIMUM OF TWO INDIVIDUAL EVENTS, BUT NOT ALLOWED TO COMPETE IN TWO FREE SKATING EVENT CATEGORIES. SKATERS MAY SKATE IN TWO DANCE EVENTS. ARTISTIC SOLO AND ARTISTIC DUET ARE CONSIDERED DIFFERENT CATEGORIES.

Late entries will be accepted at the discretion of the Competition Committee. Changes will only be made if a mistake is made on the part of the Registrar. No special requests will be taken for scheduling of Individual Events. Any change to skating level or event after the deadline may be subject to a \$25.00 administration fee.

2025-2026 MICHIGAN HIGH SCHOOL FIGURE SKATING STATE CHAMPIONSHIP

Registration for **Team Events must be paid in full no later than February 20, 2026, OR one week following your final district meet.**

Team Name \_\_\_\_\_

High Team – Entry Fee (\$170.00) \_\_\_\_\_

Intermediate Team – Entry Fee (\$170.00) \_\_\_\_\_

Low Team Team – Entry Fee (\$170.00) \_\_\_\_\_

TOTAL FEES: \_\_\_\_\_

Registration for **Individual Events must be paid in full no later than February 20, 2026.**

Individual Events: Please print and include coupon generated from: [www.sk8stuff.com](http://www.sk8stuff.com), and attach to this form.

**INDIVIDUAL ENTRIES POSTMARKED AFTER FEBRUARY 20, 2026, ARE SUBJECT TO A \$50.00 LATE FEE.**

CONTACTS:

Primary Coach: \_\_\_\_\_

Phone #: \_\_\_\_\_ Email: \_\_\_\_\_

Team Manager: \_\_\_\_\_

Phone #: \_\_\_\_\_ Email: \_\_\_\_\_

Volunteer #1: \_\_\_\_\_

Phone #: \_\_\_\_\_ Email: \_\_\_\_\_

Volunteer #2: \_\_\_\_\_

Phone #: \_\_\_\_\_ Email: \_\_\_\_\_

Volunteer #3: \_\_\_\_\_

Phone #: \_\_\_\_\_ Email: \_\_\_\_\_

Please submit a single check. No individual checks.

A fee of \$35.00 will be charged for all returned checks.

Mail completed forms and payments to: Detroit Metro Skating Council, c/o Mary Moss, 6565 Kolb, Allen Park, MI 48101-2313



## **Final Round Ties Decided by Runoff**

If there is a tie at any level (A/High, B/Intermediate, or C/Low) for FIRST PLACE (only) then a runoff will take place to determine the State Championship team for that (those) levels.

Marks will be calculated as quickly as possible following each event so that we may inform teams of the need for any runoffs. Any announcement of runoffs needed will be performed in the RINK, using the standard announcer. If a runoff-eligible team leaves the building or is not available within 5 minutes after such announcement, they will forfeit the runoff and be awarded 2nd place.

The runoff will consist of 3 elements, each to be performed by a skater as chosen by the coach or team. The elements shall be:

1/ Solo Jump (level High: any double jump except double Axel; level Intermediate: choice of single toe loop, single Salchow, single loop, single flip, single Lutz, or double Salchow; level Low single Salchow or single toe loop)

2/ Combination Jump (level High: double/double or triple/double; level Intermediate: single/single or single/double; level Low: single/single (no Axel, waltz jump ok)

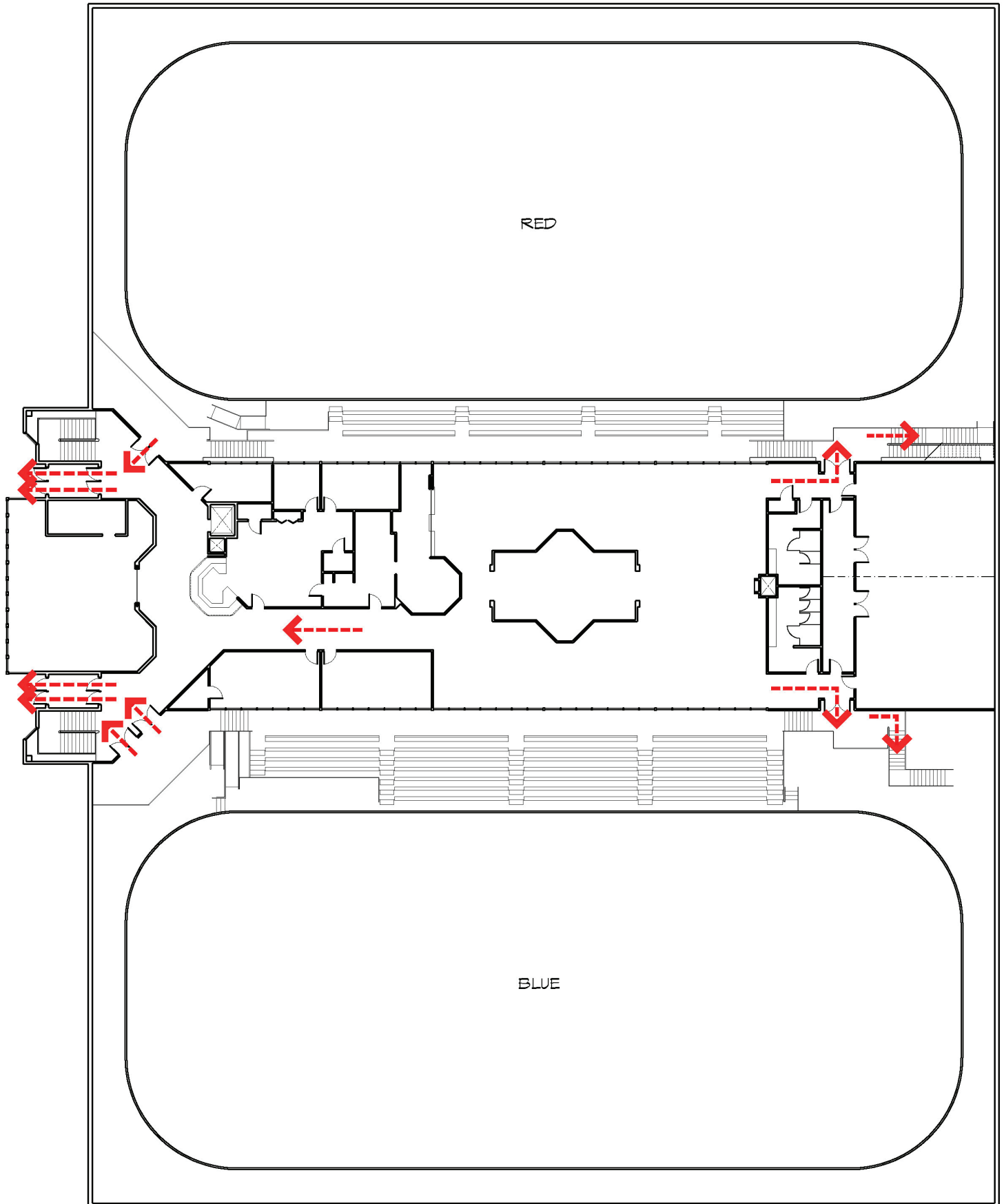
3/ Spin (level High combo spin must include 3 positions and at least 1 change of foot; level Intermediate combo spin with 1 change of foot, change of position is optional; level Low: sit spin, no change of foot)

The judges will award a single mark to each team, based on their evaluation of the quality of the 3 elements performed by that team. If there is a tie for 2nd or 3rd place at any level, the marks will remain as a tie.

## **Team Event Element Clarification for States**

Also for reference, for those elements which had different specifications at Comp 1, Comp 2, and Comp 3 during the regular season (i.e. solo jump element) then at State Championships, the skater may choose to perform the element appropriate to ANY of the 3 competitions.

# RINK LAYOUT



EMERGENCY EVACUATION PLAN

MEZZANINE LEVEL

NOVI ICE RINK