



2022 - 2023 LAURA MAKI MICHIGAN HIGH SCHOOL STATE CHAMPIONSHIP ANNOUNCEMENT
Michigan High School Skating/Detroit Metro Skating Council
mihighschoolskating@gmail.com
March 25 & 26, 2023

The 2022-2023 Laura Maki Michigan High School State Championships will be conducted in accordance with the rules and regulations of U.S. Figure Skating, as set forth in the [current rulebook](#), in compliance with the Michigan High School Athletic Association, the Michigan High School Rules and Regulations, well as any pertinent updates that have been posted on the U.S. Figure Skating [website](#).

This competition is the culmination of the Michigan High School Team Competition series, and includes an individual competition, open to all Michigan high school 2022-2023 team participants, per the high school rules and regulations, and Michigan high school teams finishing either first or second in their districts.

COVID-19 EVENT POLICIES:

Safe Distancing is encouraged by all participants and attendees.

Michigan High School Figure Skating appreciates your cooperation in advance of this year's season. Please note that the Michigan High School Figure Skating season (December 1, 2022 through March 31, 2023) will be following the Health and Safety Protocols based on the current Federal, State of Michigan, Michigan High School Athletic Association, Local Governments and Health Agencies, and USFS recommendations and guidelines as pertaining to COVID19. Protocols are subject to change at any time. Michigan High School Skating will also comply with any additional individual rink mandates for this final state championship. Michigan High School Skating is fully committed to the health, safety and well-being of its skaters, officials, and volunteers. Masking and safe social distancing are required, in addition to any individual rink protocols.

2023 LAURA MAKI MICHIGAN HIGH SCHOOL STATE CHAMPIONSHIP ANNOUNCEMENT
SUBJECT TO COVID RESTRICTIONS STATED IN THE COVER SHEET

Contact:

All announcement and pertinent information will be found on the Michigan High School page at sk8stuff.com

Margie Banner – e-mail: mihighschoolskskating@gmail.com – ph: 248-207-0765.

Registrar: Mary Moss – e-mail: wvandotteskater@msn.com – ph: 313-567-8770 (8am-4:30pm); mailing address: 6565 Kolb, Allen Park, MI 48101.

Dates & Locations:

March 25, 2023, Individual Events. 8am-8pm; March 26, 2023, Team Events, 8am-4pm, Suburban Ice Arena, 2810 Hannah Blvd., E. Lansing, MI 48823 (517-336-4272. Host: Capital Area.

Sanctioning:

Sanctioned by US Figure Skating - Sanction #

Hosted by the Detroit Metro Skating Council

Chief Referee: Don Korte

Closing Dates and Entry Fees:

State Championship Competition - \$170.00 per **Level A/High** Team, \$170.00 per **Level B/Intermediate** Team, \$170.00 per **Level C/Low** Team - \$100.00 for 1st individual event, \$50.00 for 2nd individual event. Registration for **Individual events** must be paid in full by February 14, 2023. Registration for **Team events** must be paid in full no later than March 1, 2023 **OR one week following your final district meet.** Skaters making changes to individual events will be charged \$25.00 for changes.

All entries fees are non-refundable and must be paid by check or money order payable to Detroit Metro Skating Council.
ONE CHECK OR MONEY ORDER REQUIRED PER TEAM (no cash and no individual skater checks).
No late entries will be accepted. A fee of \$30 will be charged for all returned checks.

Test Levels:

Skaters must compete at their registered US FIGURE SKATING or ISI test level or one level higher as of November 1, 2022. Skaters must be a member of USFS to compete.

US Figure Skating Freestyle or Moves-in-the-field Test and ISI Test Equivalents

Beginner - ISI Freestyle 1 or 2

Pre-Preliminary - ISI Freestyle 3 & 4

Preliminary - ISI Freestyle 4, 5 & 6

Pre-Juvenile - ISI Freestyle 5, 6 & 7

Juvenile - ISI Freestyle 6, 7 & 8

Intermediate - ISI Freestyle 7 & 8

Novice - ISI Freestyle 8 & 9

Junior - ISI Freestyle 9 & 10

Senior - ISI Freestyle 10

Music for State Events:

Skaters participating in individual events should email an MP3 file of their music, clearly identified with the skater's name and each event (i.e. silver dance, intermediate FS, etc.) to: mihighschoolskskating@gmail.com. Subject line on the email should state "MUSIC".

Team Scoring:

Teams will receive points for each event based on the number of teams competing with the first place team receiving the highest number of points and the last place team receiving one point. Points from each event at the three regular season team competitions will be totaled to determine advancement to the State Championship. At the State Championship, points for each team/individual event will be totaled in the same manner to determine Team and Individual Team event awards.

Advancing to State Championships:

The top two teams from each district will advance to the State Championship. *If any of the qualifying teams from a district withdraws, the next highest ranked team will advance to the championship.*

Awards:

Championship Event – Championship medals will be awarded for each team event for overall placement. Trophies will be awarded to the First, Second and Third place teams for each level based on the accumulated point total from the team events. First, Second and Third place Championship medals will be awarded to each member of these teams. First, Second and Third place championship medals will be awarded to individuals with the highest placement for each Team Individual event. If there are run-off events, first through third placements for individual event qualifying placements earn district medals. A trophy will be awarded to the First place team with the highest Team Individual point total, at the completion of all the team events. Medals will be given to the first three places at the initial events; awards will be given after each event. Team awards will be awarded at the end of all team competitions. In team events, skaters who participate in each category and every event will be given medals.

2022-2023 MICHIGAN HIGH SCHOOL FIGURE SKATING TEAM COMPETITION SERIES

Rules & Eligibility

1. The competition will be conducted in accordance with the rules as stated in the current US Figure Skating Rule 3200 under "Special Competitions." In addition, Michigan High School Figure Skating follows the rules of the Michigan High School Athletic Association (MHSAA). This announcement will take precedence if there is a conflict with the US Figure Skating Rulebook.
2. Each team must be a US Figure Skating School Affiliated Club (SAC). The SAC application form can be downloaded from the US Figure Skating website at usfigureskating.org/Programs.asp?id=67. The form should be completed and returned to US Figure Skating. Please submit a copy of the SAC application or SAC Certificate for proof of membership along with your application to the competition chair.
3. All skaters must be members of US Figure Skating in order to qualify for competition entry and provide their membership number on attached forms.
4. Each team member must be a member in good standing with the US Figure Skating and their home club.
5. All skaters who enter **must be in at least 9th grade and be enrolled as a student in high school** as per the MHSAA Handbook, Regulation I, Section 2.
6. A team will consist of at least two skaters from one high school. All teams must have high school administrative or an Athletic Director's approval.
7. High schools may combine as per the MHSAA Handbook, Regulation I, Section 1 (F). All teams wishing to combine must complete an application form and submit it to the high school committee for approval. **No recruiting or stacking is allowed.** You will be notified if the combined team is approved. Each school that is combining must be listed on the team application form. If the proposed combined team is not from the same school district, the following rules apply: An administrator or Athletic Director from each school must sign the team entry form. All skaters from the combined schools must be allowed to skate on the team. **The high school committee reserves the right to limit the number of schools and/or skaters that may combine to form a team.**
8. Private school skaters must compete for the high school they are actually enrolled in or with an approved combined team.
9. Home-schooled skaters may compete for a high school in the district in which they are a resident. In districts with more than one high school, home-schoolers must reside in the boundaries of the high school for which they wish to compete. Proof of residency must be provided to the high school committee, along with the completed application form, signed by the Athletic Director.
10. **The high school committee will grant final approval of a team's membership.**
11. In the event there is a dispute regarding eligibility or combined team approval, decisions may be appealed. ALL appeals must be submitted in writing to the Michigan High School Committee (insert address). Decisions will be rendered as quickly as possible. In the event your appeal is denied, you may further appeal in writing to the Detroit Metro Skating Council, c/o William Goen, Chair, email: billgoen@comcast.net, as the LOC of the sanctioned, non-qualifying high school figure skating competitions. **Decisions by the Detroit Metro Skating Council on ALL appeals "WILL BE FINAL", per USFSA rules, 3000A and 3200C.** After a final decision is made on any appeal, any non-compliant teams thereafter will be **BARRED** from taking the ice at any sanctioned Michigan High School Figure Skating competition by the Event Referee.
12. A skater will not be allowed to participate unless they have a signed Skater Entry Form on file with the Registrar at least one week prior to the first competition of the season.
13. Per the MHSAA Handbook, Regulation I, Section 9, a student that transfers from one high school to another is not immediately eligible to participate unless the student qualifies under one or more of the exceptions outlined in Section 9 (A), 1 – 15, and approved by the high school committee.
14. The competition referee has the final discretion as to whether a skater may or may not compete if the skater's health and safety are in question, due to a fall or injury.
15. Per the MHSAA Handbook, Regulation II, Section 11, no team may have organized team practices (with a coach present) outside of the competition season which officially begins **November 1st, 2022**. Teams found having organized practices outside of the season are subject to disqualification.
16. A skater may not accept prize money in any amount or merchandise having a value greater than \$25 for any skating competition.
17. Team or individual byes will not be granted for any competition including the State Championship. In the case of injury, a skater who has been a registered member on the submitted roster of an approved team, since the beginning of the season, may be eligible to compete at the State Championship with the prior approval of the high school committee, provided a written medical excuse is submitted to the high school committee.

18. The high school committee reserves the right to limit the number of entries, eliminate events due to insufficient entries, and combine or divide groups as necessary.
19. **Late entries will not be accepted. If all paper work is not turned in on time. Any late entries may or may not be accepted at the discretion of the high school committee based on availability.**
20. **No skaters may be added after the November 1, 2022 deadline, except with special permission of the registrar.**
21. No event will be canceled unless there is a state of Emergency declared in the area where the rink is located, even if school districts of participating teams have closed or cancelled events. Points will be awarded based on teams participating. There will be no refunds.
22. Team banners are encouraged.
23. No food is allowed in the arenas.
24. Unsportsmanlike conduct & foul language will not be tolerated at any competition and is grounds for disqualification.
25. This competition is hosted by the Member Club and sanctioned by US Figure Skating (SR 3.09 and SR 4.00). The Sanction Numbers for all meets and the state competition are listed on page 5 of this document. All coaches must be in compliance with Rule 1310, MR 5.11, MR 5.12, MR 5.13 or they will not be allowed to coach athletes, nor have contact, either directly or indirectly, at a venue for practice and/or at US Figure Skating events (US Figure Skating tests, competitions, performance activities, club ice, and workshops).

Participating Teams:

State Championship Events – Each participating team at state championships MUST provide three volunteers over the course of the two day event or they will not be allowed to participate. Notification of volunteer names and available times must be provided to the host team, Hartland United.

2022-2023 MICHIGAN HIGH SCHOOL FIGURE SKATING TEAM COMPETITION SERIES
Team/State Event Rules

1. If there are not at least two Level C/Low teams in a district, skaters will have the option to move up to Level B/Intermediate.
2. Skaters must compete at their test level or higher based on their US Figure Skating freestyle and moves-in-the-field test levels as of November 1, 2022 (ISI level equivalency on page one).
3. Skaters may move between levels at any given event as long as they qualify for that level. Skaters may only compete in one level for Jumps/Spins and one level for Moves at each event. In order to qualify for the State Championship, a skater must have participated at that level in at least one regular season team event.
4. All genders will skate on the same team.
5. Level A/High, B/Intermediate, and C/Low Teams must have a minimum of two skaters on their roster. **No skater to skate more than two elements in each discipline per level (spins, jumps, moves).**
6. Teams will be required to submit a Team Event Roster at check-in at least 10 minutes prior to the start of each team competition. All skaters on the team roster must be listed. If a skater is not participating due to absence, injury, or discipline, please indicate the reason in the notes column. Once the roster has been turned in, substitutions only under extenuating circumstances with Referee approval.
7. Only one skater per team may warm up each element.
8. Each team will be allowed one retry per team per level (A/High, B/Intermediate, C/Low) at Team Competitions. **The second attempt has to be the exact same element as the first attempt by the same skater.** The second attempt will count regardless of whether or not it was better than the first attempt. The skater will signal for a retry immediately by raising their hand. The Referee will raise their hand in return in acknowledgement of the request for a retry.
9. If a team does not have a skater eligible to perform an element, the team will receive no credit for that element.
10. If a team cannot participate at one of the district competitions, that team will receive no points for that competition.
12. There will be no tie-breaker for regular season events.
13. Any grievance of any event must be made within 15 minutes after the results of that event have been posted. Grievances must be submitted in writing only **by the grieving team coach** to the referee of the meet.

2022-2023 MICHIGAN HIGH SCHOOL FIGURE SKATING STATE CHAMPIONSHIP

Team Events

Note: Where an element varies for each regular season competition, the team may choose any of the elements listed for the state championship.

Level A/High

Spins	Jumps	Moves
<i>No Restrictions</i>	<i>No Restrictions</i>	<i>No Restrictions</i>
1. <u>Comp 1</u> - Sit spin, 6 revolutions in basic sit position before any change in sit position. Sit behind, forward, etc. <u>Comp 2</u> – Up Right Front to Back- 4 revolutions each foot. No Feature changes. <u>Comp 3</u> – Camel spin, 6 revolutions in position, no catch foot position.	1) Comp 1 - Double Flip or Double Toe-Loop Comp 2 - Double Loop or Double Salchow Comp 3 - Double Lutz or Double Toe-Loop	1) Spiral Sequence – Serpentine or Circular. See US Figure Skating rulebook for description of spirals which may be included. Only first 3 spirals will be counted by the judges. No more than 3 steps between spirals. No catch-foot spirals.
2. Layback or Cross foot Spin, 6 revolutions (Bielman or hair-cutter not counted)	2) Comp 1 & 2 - Single Axel Comp 3 – Single Axel or Double Axel	2) <u>Comp 1</u> - Back loops BO pattern (Jr 5a) <u>Comp 2</u> - Forward loops (Novice 4) <u>Comp 3</u> – Back loops BI pattern (Jr 5b)
3. Flying Spin – No changes of position or foot. 6 revolutions.	3) Combination Jump – Double/Double or Triple/Double Jump	3) Ina Bauer or Spread Eagle. Only one named element will be counted
4. Combination Spin – Must include 3 positions, 1 change of foot. 2 revolutions each position.	4) Split Jump Sequence (only the first 3 will be counted). No additional elements in-between split jumps.	4) Straight Line Step Sequence (either foot of choice (Jr 6)

Level B/Intermediate

Spins	Jumps	Moves
<i>Must not have passed Intermediate Freestyle</i>	<i>Must not have passed Intermediate Freestyle</i>	<i>Must not have passed Novice Moves</i>
1) <u>Comp 1</u> – Camel, 4 revolutions in basic camel position. No catch foot camels. <u>Comp 2</u> - Layback or Upright, 4 revolutions in basic position. <u>Comp 3</u> – Sit spin in basic sit position, 4 revolutions.	1) Comp 1 - Single Flip or Salchow Comp 2 - Single Lutz or ToeLoop Comp 3 - Single Lutz or Dbl Salchow	1) Ina Bauer, Back Spiral or Spread Eagle (one position only, may change edge; may not change feet or combine above). No catch-foot spirals.
2) Forward Scratch Spin, 4 revolutions.	2) Single Axel or Double Toe Loop	2) 8-Step Mohawk Sequence (Juv 3)
3) Back Spin – Position optional, 4 revolutions.	3) Combination Jump – Single/Single or Double/Single Jump	3) Forward Spiral. No catch-foot spirals.
4) Combination Spin - 1 change of foot, 4 revolutions each foot.	4) Single Loop	4) <u>Comp 1</u> – FO Twizzles R & L (Int 4a) <u>Comp 2</u> - 5-Step Mohawk Sequence (prejuv 6) <u>Comp 3</u> – FI Twizzles R & L (Int 4b)

Level C/Low

SPINS-Must not have passed Preliminary Freestyle	JUMPS-Must not have passed Preliminary Freestyle	MOVES-Must not have passed Pre-juvenile Moves
1. 2 Foot Spin, 3 revolutions	1. ½ Jump (waltz, 1/2 flip, ½ lutz, or bunny hop)	1. Forward Right & Left Spiral. (Pre-Pre #3). No catch-foot spirals.
2. Forward Upright Spin, 3 revolutions.	2. Single Toe-Loop	2. Basic Consecutive Edges (Pre- Preliminary #2 skater will perform BO and BI patterns only.)
3. Sit Spin, 3 revolutions.	3. Combination Jump - Single/Single (no Axel, waltz jump ok)	3. Forward Power 3s (R & L) (Prelim 3)
4. Back upright spin, 3 revolutions.	4. Single Salchow	4. Alternating Forward 3s. (Prelim #4)

All LEVELS: Spins at all levels are to be held in the basic position for the required revolutions. Features will be given value, but only if the required revolutions are accomplished. Combination spins must be held for the required revolutions as stated.

2022-2023 MICHIGAN HIGH SCHOOL FIGURE SKATING TEAM COMPETITION SERIES

Individual Events

Music:

CDs only, one-track only, marked with skater's name, school, level, and program length. CDs must be turned in at registration. **Bring a back-up CD.**

Eligibility:

Skaters may not skate below their US Figure Skating test level as of November 1, 2022, but may skate up one level higher (ISI level equivalency on page one). Skaters may compete in a maximum of 2 individual events, which may be any combination of Excel, Solo Dance, Artistic and Duet events. Duet event teams must be comprised of exactly 2 skaters, both representing the same school/team.

Long Program	Time	Rules
Excel Beginner	1:40 max.	Beginner elements; See USFS rules
Excel High Beginner	1:40 max.	High Beginner elements; See USFS rules
Excel Pre-Preliminary	1:40 max.	Excel See USFS rules
Excel Preliminary	2:00 +/- 10 sec	Excel See USFS rules
Excel Preliminary Plus	2:00 +/- 10 sec	Excel See USFS rules
Excel Pre-Juvenile	2:00 +/- 10 sec	Excel See USFS rules
Excel Pre-Juvenile Plus	2:00 +/- 10 sec	Excel See USFS rules
Excel Juvenile	2:30 +/- 10 sec	Excel See USFS rules
Excel Juvenile Plus	2:30 +/- 10 sec	Excel See USFS rules
Excel Intermediate	3:00 +/- 10 sec	Excel See USFS rules
Excel Intermediate Plus	3:00 +/- 10 sec	Excel See USFS rules
Excel Novice	3:30 +/- 10 sec	Excel See USFS rules (Ladies and Men combined; use Ladies timing for all)
Excel Junior	3:30 +/- 10 sec	Excel See USFS rules (Ladies and Men combined; use Ladies timing for all)
Excel Senior	4:00 +/- 10 sec	Excel See USFS (Ladies and Men combined; use Ladies timing for all)

Excel chart available at: <http://www.usfigureskating.org/content/Excel%20Free%20Skate%20Requirements%20Final.pdf>

SOLO DANCE EVENT *If a skater has passed the first Dance at a level, they must skate at that level or one level higher.*

Level	Dance	Rules	Level	Dance	Rules
Preliminary	Dutch Waltz	2 patterns	Silver	Tango	2 patterns
Pre-Bronze	Swing Dance	2 patterns	Pre-Gold	Blues	3 patterns
Bronze	Willow Waltz	2 patterns	Gold	Argentine Tango	2 patterns
Pre-Silver	Fourteenstep	3 patterns			

ARTISTIC SHOWCASE EVENT

Programs are to be skated to music and should be designed to entertain and/or emotionally move the audience. Costumes are encouraged. Hand Held Props only - must stay with the skater for the entire performance - may not be placed or tossed on the ice. Duets must skate at the level of the highest skater.

Event	Freestyle Level	Time	Rules
-------	-----------------	------	-------

Artistic Solo	No Test-PrePreliminary (max Preliminary Moves)	Max 1:30 minutes	Max PrePreliminary Moves. No Axels or double jumps.
Artistic Solo	Preliminary-Pre Juvenile	Max 1:40 minutes	No Axels or double jumps.
Artistic Solo	Juvenile – Novice	Max 2:10 minutes	No double jumps.
Artistic Solo	Junior - Senior	Max 2:40 minutes	May include one double jump.
Artistic Duet	No Test- Pre-Preliminary	Max 1:30 minutes	No Axels or double jumps (max 2 skaters/team)
Artistic Duet	Preliminary-Pre-Juvenile	Max 1:30 minutes	No Axels or double jumps (max 2 skater/team)
Artistic Duet	Juvenile - Novice	Max 2:10 minutes	May include one double jump (max 2 skaters)
Artistic Duet	Junior - Senior	Max 2:30 minutes	May include one double jump (max 2 skaters)

2022-2023 MICHIGAN HIGH SCHOOL FIGURE SKATING TEAM COMPETITION SERIES
STATE CHAMPIONSHIP
TEAM INDIVIDUAL ROSTER

PAYMENT AND FORMS MUST BE POSTMARKED BY FEBRUARY 14, 2023
ANY FORMS POSTMARKED FEBRUARY 15, 2023 AND AFTER WILL BE CHARGED A \$35.00 LATE FEE

District # _____ Name of Team _____
Name of Coach _____

MAXIMUM OF 2 EVENTS PER SKATER. SKATERS MAY NOT SKATE BELOW THEIR US FIGURE SKATING OR ISI TEST LEVEL AS OF NOVEMBER 1, 2022, BUT MAY SKATE UP ONE LEVEL HIGHER (ISI LEVEL EQUIVALENCY ON PAGE ONE). SKATERS MAY COMPETE IN A MAXIMUM OF TWO INDIVIDUAL EVENTS, BUT NOT ALLOWED TO COMPETE IN TWO FREE SKATING EVENT CATEGORIES. SKATERS MAY SKATE IN TWO DANCE EVENTS. ARTISTIC SOLO AND ARTISTIC DUET ARE CONSIDERED DIFFERENT CATEGORIES.

Late entries will be accepted at the discretion of the Competition Committee. Changes will only be made if a mistake in made on the part of the Registrar. No special requests will be taken for scheduling of Individual Events. Any change to skating level or event after the deadline might be subjected to a \$15.00 administration fee.

PLEASE PRINT LEGIBLY

EXCEL BEGINNER FS

EXCEL HIGH BEGINNER FS

EXCEL PRE-PRELIMINARY

EXCEL PRELIMINARY

2022-2023 MICHIGAN HIGH SCHOOL FIGURE SKATING TEAM COMPETITION SERIES
STATE CHAMPIONSHIP
TEAM INDIVIDUAL ROSTER

PAYMENT AND FORMS MUST BE POSTMARKED BY FEBRUARY 14, 2023
ANY FORMS POSTMARKED FEBRUARY 15, 2023 AND AFTER WILL BE CHARGED A \$35.00 LATE FEE

District # _____

Name of Team _____

Name of Coach _____

MAXIMUM OF 2 EVENTS PER SKATER. SKATERS MAY NOT SKATE BELOW THEIR US FIGURE SKATING OR ISI TEST LEVEL AS OF NOVEMBER 1, 2022, BUT MAY SKATE UP ONE LEVEL HIGHER (ISI LEVEL EQUIVALENCY ON PAGE ONE). SKATERS MAY COMPETE IN A MAXIMUM OF TWO INDIVIDUAL EVENTS, BUT NOT ALLOWED TO COMPETE IN TWO FREE SKATING EVENT CATEGORIES. SKATERS MAY SKATE IN TWO DANCE EVENTS. ARTISTIC SOLO AND ARTISTIC DUET ARE CONSIDERED DIFFERENT CATEGORIES.

Late entries will be accepted at the discretion of the Competition Committee. Changes will only be made if a mistake in made on the part of the Registrar. No special requests will be taken for scheduling of Individual Events. Any change to skating level or event after the deadline might be subjected to a \$15.00 administration fee.

PLEASE PRINT LEGIBLY

EXCEL PRELIMINARY PLUS

EXCEL PRE-JUVENILE

EXCEL PRE-JUVENILE PLUS

EXCEL JUVENILE

2022-2023 MICHIGAN HIGH SCHOOL FIGURE SKATING TEAM COMPETITION SERIES
STATE CHAMPIONSHIP
TEAM INDIVIDUAL ROSTER

PAYMENT AND FORMS MUST BE POSTMARKED BY FEBRUARY 14, 2023

ANY FORMS POSTMARKED FEBRUARY 17, 2023 AND AFTER WILL BE CHARGED A \$35.00 LATE FEE

District # _____

Name of Team _____

Name of Coach _____

MAXIMUM OF 2 EVENTS PER SKATER. SKATERS MAY NOT SKATE BELOW THEIR US FIGURE SKATING OR ISI TEST LEVEL AS OF NOVEMBER 1, 2022, BUT MAY SKATE UP ONE LEVEL HIGHER (ISI LEVEL EQUIVALENCY ON PAGE ONE). SKATERS MAY COMPETE IN A MAXIMUM OF TWO INDIVIDUAL EVENTS, BUT NOT ALLOWED TO COMPETE IN TWO FREE SKATING EVENT CATEGORIES. SKATERS MAY SKATE IN TWO DANCE EVENTS. ARTISTIC SOLO AND ARTISTIC DUET ARE CONSIDERED DIFFERENT CATEGORIES.

Late entries will be accepted at the discretion of the Competition Committee. Changes will only be made if a mistake is made on the part of the Registrar. No special requests will be taken for scheduling of Individual Events. Any change to skating level or event after the deadline might be subjected to a \$15.00 administration fee.

PLEASE PRINT LEGIBLY

EXCEL JUVENILE PLUS

EXCEL INTERMEDIATE

EXCEL INTERMEDIATE PLUS

EXCEL NOVICE

EXCEL JUNIOR

EXCEL SENIOR

2022-2023 MICHIGAN HIGH SCHOOL FIGURE SKATING TEAM COMPETITION SERIES
STATE CHAMPIONSHIP
TEAM INDIVIDUAL ROSTER

PAYMENT AND FORMS MUST BE POSTMARKED BY FEBRUARY 14, 2023

ANY FORMS POSTMARKED FEBRUARY 15, 2023 AND AFTER WILL BE CHARGED A \$35.00 LATE FEE

District # _____

Name of Team _____

Name of Coach _____

MAXIMUM OF 2 EVENTS PER SKATER. SKATERS MAY NOT SKATE BELOW THEIR US FIGURE SKATING OR ISI TEST LEVEL AS OF NOVEMBER 1, 2022, BUT MAY SKATE UP ONE LEVEL HIGHER (ISI LEVEL EQUIVALENCY ON PAGE ONE). SKATERS MAY COMPETE IN A MAXIMUM OF TWO INDIVIDUAL EVENTS, BUT NOT ALLOWED TO COMPETE IN TWO FREE SKATING EVENT CATEGORIES. SKATERS MAY SKATE IN TWO DANCE EVENTS. ARTISTIC SOLO AND ARTISTIC DUET ARE CONSIDERED DIFFERENT CATEGORIES.

Late entries will be accepted at the discretion of the Competition Committee. Changes will only be made if a mistake in made on the part of the Registrar. No special requests will be taken for scheduling of Individual Events. Any change to skating level or event after the deadline might be subjected to a \$15.00 administration fee.

PLEASE PRINT LEGIBLY

NO TEST – PRE-PRELIMINARY - ARTISTIC SHOWCASE 1:30 MAX.

PRELIMINARY - PRE-JUVENILE - ARTISTIC SHOWCASE 1:40 MAX.

JUVENILE – NOVICE - ARTISTIC SHOWCASE 2:10 MAX.

JUNIOR –SENIOR - ARTISTIC SHOWCASE 2:30 MAX.

2022-2023 MICHIGAN HIGH SCHOOL FIGURE SKATING TEAM COMPETITION SERIES
STATE CHAMPIONSHIP
TEAM INDIVIDUAL ROSTER

PAYMENT AND FORMS MUST BE POSTMARKED BY FEBRUARY 14, 2023
ANY FORMS POSTMARKED FEBRUARY 15, 2023 AND AFTER WILL BE CHARGED A \$35.00 LATE FEE

District # _____ Name of Team _____
Name of Coach _____

MAXIMUM OF 2 EVENTS PER SKATER. SKATERS MAY NOT SKATE BELOW THEIR US FIGURE SKATING OR ISI TEST LEVEL AS OF NOVEMBER 1, 2022, BUT MAY SKATE UP ONE LEVEL HIGHER (ISI LEVEL EQUIVALENCY ON PAGE ONE). SKATERS MAY COMPETE IN A MAXIMUM OF TWO INDIVIDUAL EVENTS, BUT NOT ALLOWED TO COMPETE IN TWO FREE SKATING EVENT CATEGORIES. SKATERS MAY SKATE IN TWO DANCE EVENTS. ARTISTIC SOLO AND ARTISTIC DUET ARE CONSIDERED DIFFERENT CATEGORIES.

Late entries will be accepted at the discretion of the Competition Committee. Changes will only be made if a mistake in made on the part of the Registrar. No special requests will be taken for scheduling of Individual Events. Any change to skating level or event after the deadline might be subjected to a \$15.00 administration fee.

PLEASE PRINT LEGIBLY

NO TEST PRE-PRELIMINARY DUET 1:30 MAX.

_____	&	_____
_____	&	_____
_____	&	_____
_____	&	_____

_____	&	_____
PRELIMINARY - PRE-JUVENILE DUET 1:40 MAX.		
_____	&	_____
_____	&	_____
_____	&	_____
_____	&	_____
_____	&	_____
JUVENILE –NOVICE DUET 2:10 MAX.		
_____	&	_____
_____	&	_____
_____	&	_____
_____	&	_____
_____	&	_____
JUNIOR – SENIOR DUET 2:30 MAX.		
_____	&	_____
_____	&	_____
_____	&	_____
_____	&	_____
_____	&	_____

2022-2023 MICHIGAN HIGH SCHOOL FIGURE SKATING TEAM COMPETITION SERIES
 STATE CHAMPIONSHIP
 TEAM INDIVIDUAL ROSTER

PAYMENT AND FORMS MUST BE POSTMARKED BY FEBRUARY 14, 2023.

ANY FORMS POSTMARKED FEBRUARY 15, 2023 AND AFTER WILL BE CHARGED A \$35.00 LATE FEE

District # _____ Name of Team _____
 Name of Coach _____

MAXIMUM OF 2 EVENTS PER SKATER. SKATERS MAY NOT SKATE BELOW THEIR US FIGURE SKATING OR ISI TEST LEVEL AS OF NOVEMBER 1, 2022, BUT MAY SKATE UP ONE LEVEL HIGHER (ISI LEVEL EQUIVALENCY ON PAGE ONE). SKATERS MAY COMPETE IN A MAXIMUM OF TWO INDIVIDUAL EVENTS, BUT NOT ALLOWED TO COMPETE IN TWO FREE SKATING EVENT CATEGORIES. SKATERS MAY SKATE IN TWO DANCE EVENTS. ARTISTIC SOLO AND ARTISTIC DUET ARE CONSIDERED DIFFERENT CATEGORIES.

Late entries will be accepted at the discretion of the Competition Committee. Changes will only be made if a mistake in made on the part of the Registrar. No special requests will be taken for scheduling of Individual Events. Any change to skating level or event after the deadline might be subjected to a \$15.00 administration fee.

PLEASE PRINT LEGIBLY

PRELIMINARY SOLO DANCE

PRE-BRONZE SOLO DANCE

BRONZE SOLO DANCE

2022-2023 MICHIGAN HIGH SCHOOL FIGURE SKATING TEAM COMPETITION SERIES
STATE CHAMPIONSHIP
TEAM INDIVIDUAL ROSTER

PAYMENT AND FORMS MUST BE POSTMARKED BY FEBRUARY 14, 2023
ANY FORMS POSTMARKED FEBRUARY 15, 2023 AND AFTER WILL BE CHARGED A \$35.00 LATE FEE

District # _____

Name of Team _____

Name of Coach _____

MAXIMUM OF 2 EVENTS PER SKATER. SKATERS MAY NOT SKATE BELOW THEIR US FIGURE SKATING OR ISI TEST LEVEL AS OF NOVEMBER 1, 2022, BUT MAY SKATE UP ONE LEVEL HIGHER (ISI LEVEL EQUIVALENCY ON PAGE ONE). SKATERS MAY COMPETE IN A MAXIMUM OF TWO INDIVIDUAL EVENTS, BUT NOT ALLOWED TO COMPETE IN TWO FREE SKATING EVENT CATEGORIES. SKATERS MAY SKATE IN TWO DANCE EVENTS. ARTISTIC SOLO AND ARTISTIC DUET ARE CONSIDERED DIFFERENT CATEGORIES.

Late entries will be accepted at the discretion of the Competition Committee. Changes will only be made if a mistake is made on the part of the Registrar. No special requests will be taken for scheduling of Individual Events. Any change to skating level or event after the deadline might be subjected to a \$15.00 administration fee.

PLEASE PRINT LEGIBLY

PRE-SILVER SOLO DANCE

TOTAL _____

CONTACTS

Team Manager _____

Phone # _____ Email _____

Primary Coach _____

Phone # _____ Email _____

Volunteer #1 _____

Phone # _____ Email _____

Volunteer #2 _____

Phone # _____ Email _____

Please submit a single check. No Individual checks please.

A fee of \$30.00 will be charged for all returned checks.

Mail completed forms and payment to: Detroit Metro Skating Council, c/o Mary Moss, 6565 Kolb, Allen Park, MI 48101-2313

Final Round Ties Decided by Runoff

If there is a tie at any level (A/High, B/Intermediate, or C/Low) for FIRST PLACE (only) then a runoff will take place to determine the State Championship team for that (those) levels.

Marks will be calculated as quickly as possible following each event so that we may inform teams of the need for any runoffs. Any announcement of runoffs needed will be performed in the RINK, using the standard announcer. If a runoff-eligible team leaves the building or is not available within 5 minutes after such announcement, they will forfeit the runoff and be awarded 2nd place.

The runoff will consist of 3 elements, each to be performed by a skater as chosen by the coach or team. The elements shall be:

1/ Solo Jump (level A/High: any double jump except double Axel; level B/Intermediate: choice of single toe loop, single Salchow, single loop, single flip, single Lutz, or double Salchow; level C/Low single Salchow or single toe loop)

2/ Combination Jump (level A/High: double/double or triple/double; level B/Intermediate: single/single or single/double; level C/Low: single/single (no Axel, waltz jump ok)

3/ Spin (level A/High combo spin must include 3 positions and at least 1 change of foot; level B/Intermediate combo spin with 1 change of foot, change of position is optional; level C/Low: sit spin, no change of foot)

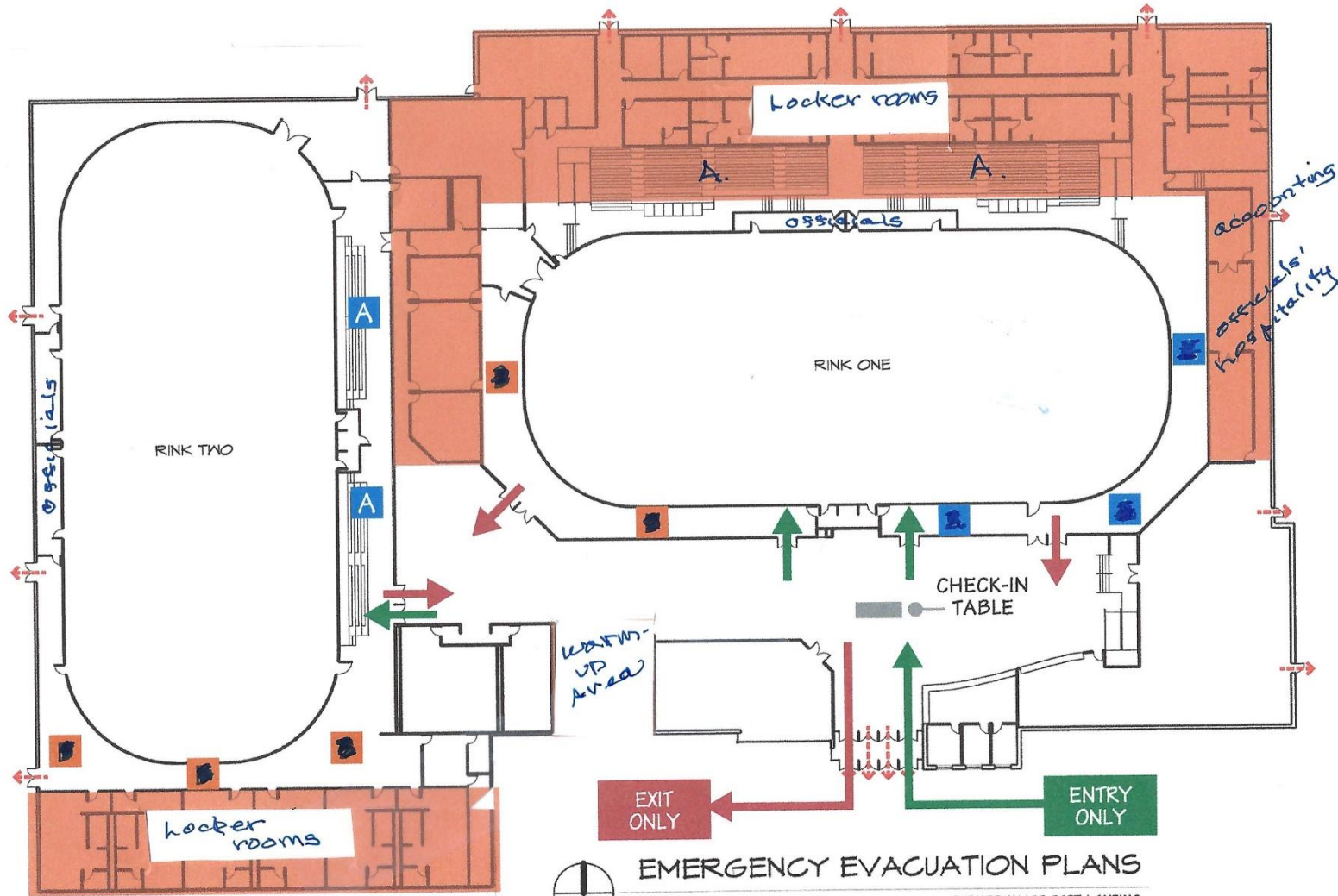
The judges will award a single mark to each team, based on their evaluation of the quality of the 3 elements performed by that team. If there is a tie for 2nd or 3rd place at any level, the marks will remain as a tie.

Team Event Element Clarification for States

Also for reference, for those elements which had different specifications at Comp 1, Comp 2, and Comp 3 during the regular season (i.e. solo jump element) then at State Championships, the skater may choose to perform the element appropriate to ANY of the 3 competitions.

A = PUBLIC SEATING

Suburban Ice - E. Lansing



EMERGENCY EVACUATION PLANS

SUBURBAN ICE EAST LANSING