



**15<sup>th</sup> Annual Magic City Figure Skating Club Basic Skills Competition**  
**Hosted by the Magic City Figure Skating Club**  
**Sunday January 31st, 2016**  
**MAYSA Sports Arena 2501 Burdick Expressway, Minot, North Dakota**

**Sanctioned By:**



*This event is a standard U.S. Figure Skating Nonqualifying Competition*  
LG/10-1-14



The 15<sup>th</sup> Annual Magic City Figure Club Basic Skills Competition will be conducted in accordance with the rules and regulations of U.S. Figure Skating, as set forth in the current rulebook, as well as any pertinent updates which have been posted on the U.S. Figure Skating website.

This competition is open to all eligible, restricted, reinstated or readmitted persons as defined by the Eligibility Rules, and is a currently registered member of a U.S. Figure Skating member club, a collegiate club or an individual member in accordance with the current rulebook. Please refer to the current rulebook for non-U.S. Citizens.

#### **ELIGIBILITY/TEST LEVEL:**

The competition is open to ALL skaters who are current eligible (ER 1.00) members of either the Basic Skills program and/or are full members of U.S. Figure Skating. To be eligible, skaters must have submitted a membership application or be a member in good standing. Members of other organizations are eligible to compete but must be registered with the host Basic Skills program/club or any other Basic Skills program/club. Eligibility will be based on skill level as of closing date of entries.

**All Snowplow Sam and Basic Skills 1-8 skaters** must skate at highest level passed or one level higher and NO official U.S. Figure Skating tests may have been passed including Moves in the Field or individual dances.

**For the free skate 1-6, test track and Well Balanced levels**, eligibility will be based only upon highest free skate test level passed (Moves in the Field test level will not determine skater's competitive level). Skaters may skate at highest level passed OR one level higher but not both levels in the same event during the same competition.

**ENTRIES:** Registration forms will be available for print on our website [www.magiccityfsc.com](http://www.magiccityfsc.com)  
Entry deadline will be January 15th, 2016. Forms can be mailed to:

Magic City Figure Skating Club  
PO Box 735  
Minot, ND 58702

**FEES:** First singles event: \$35.00. Each additional event: \$15.

**REFUND POLICY:** Entry fees will not be refunded after January 15th, 2016 unless no competition exists or the event is canceled. There will be no refunds for medical withdrawals. Checks returned for non-sufficient funds will be issued a \$10 fee. Payment of the fee will be required before the skater is allowed to participate in practice ice or events. Notification of competition and practice ice times will be available via the website [www.magiccityfsc.com](http://www.magiccityfsc.com)

**FACILITIES:** All events will be skated at the MAYSA Sports Arena, 2501 Burdick Expressway West. The facility has two ice surfaces, each 85 x 200 feet, with modest seating capacity. There is adjacent parking available. The arena has a snack bar and vending machines.

**REGISTRATION:** The registration desk will be open Sunday January 31<sup>st</sup> 8am at MAYSA. Skaters must check in one hour or more prior to their scheduled events.

**MUSIC:** Each skater must furnish his or her own CD labeled with the competitor's name and event for events requiring music. All CD's should be in a hard case and should only include one track per disc. Skaters must have two copies of each music selection; one will be turned in when registering and the other should be readily available in the event of a malfunction during the event. Proper care will be taken, but the MCFSC cannot accept responsibility for lost CD's. Music must be picked up at the music table after the skater's events. CD's not picked up prior to the end of competition will be returned at the competitor's expense or discarded.

**LIABILITY:** U.S. Figure Skating, MCFSC, and MAYSA Arena accept no responsibility for injury or damage sustained by any participant in this competition. This is in accordance with Rule 1600 of the official U.S. Figure Skating Rulebook.

**JUDGING SYSTEM:**

The competition is sanctioned by U.S. Figure Skating and Skate Canada. All events will be judged under the 6.0 scoring system. The competition will be conducted under the rules of U.S. Figure Skating as set forth in the 2015 Rulebook unless otherwise noted. This is a non-qualifying competition.

**PRACTICE ICE:** Skaters will be able to purchase practice ice. Practice ice will be \$10 for each 30 minute session. No music will be played.

**PHOTOGRAPHY:** A photographer will be available during the competition. Pictures will be taken of the top four skaters in each group as soon as possible after awards are posted. All photos and additional shots will be available for purchase.

**AWARDS:** Medals will be awarded to the top three skaters and ribbons will be awarded to the skaters placing fourth through seventh in each event.

**OFFICIAL NOTICES:** Schedules will be posted on the web at [www.magiccityfsc.com](http://www.magiccityfsc.com)

### **INFORMATION REGARDING COACHES:**

U.S. Figure Skating Rule MR 5.11 Coach Registration

In order to be granted access to work within U.S. Figure Skating sanctioned activities, each coach must complete the following requirements on an annual basis by July 1:

A. Must be a current full member of U.S. Figure Skating - either through a member club or as an individual member;

B. Must complete the coach registration process through the U.S. Figure Skating Members Only site, submit proper payment for the annual registration fee of \$30 and, if 18 years of age or older, successfully pass the background screen.

C. Must complete the appropriate CER courses (A, B, C or D) depending on the highest level of students being coached as of July 1. See rule MR 5.12.

D. Must submit proof of current general liability insurance with limits of \$1 million per occurrence/\$5 million aggregate.

For Basic Skills ONLY coaches - Any person, 18 and older, instructing in a U.S. Figure Skating Basic Skills Program must have successfully passed the annual background screen and be registered as a Basic Skills instructor member.

For more information regarding Coach Compliance, please refer to:

<http://www.usfigureskating.org/Content/Coaching%20Compliance%20Toolkit.pdf>

**CONTACT INFO:** If you have questions, please contact:

Erin Holt: Competition Chair, 701-720-8973

Shandra Stai: Co-Basic Skills Director/Co-Competition Chair, 701-240-5050

Tracey Deren: Co-Basic Skills Director, 701-500-2589

[www.magiccityfsc.com](http://www.magiccityfsc.com)

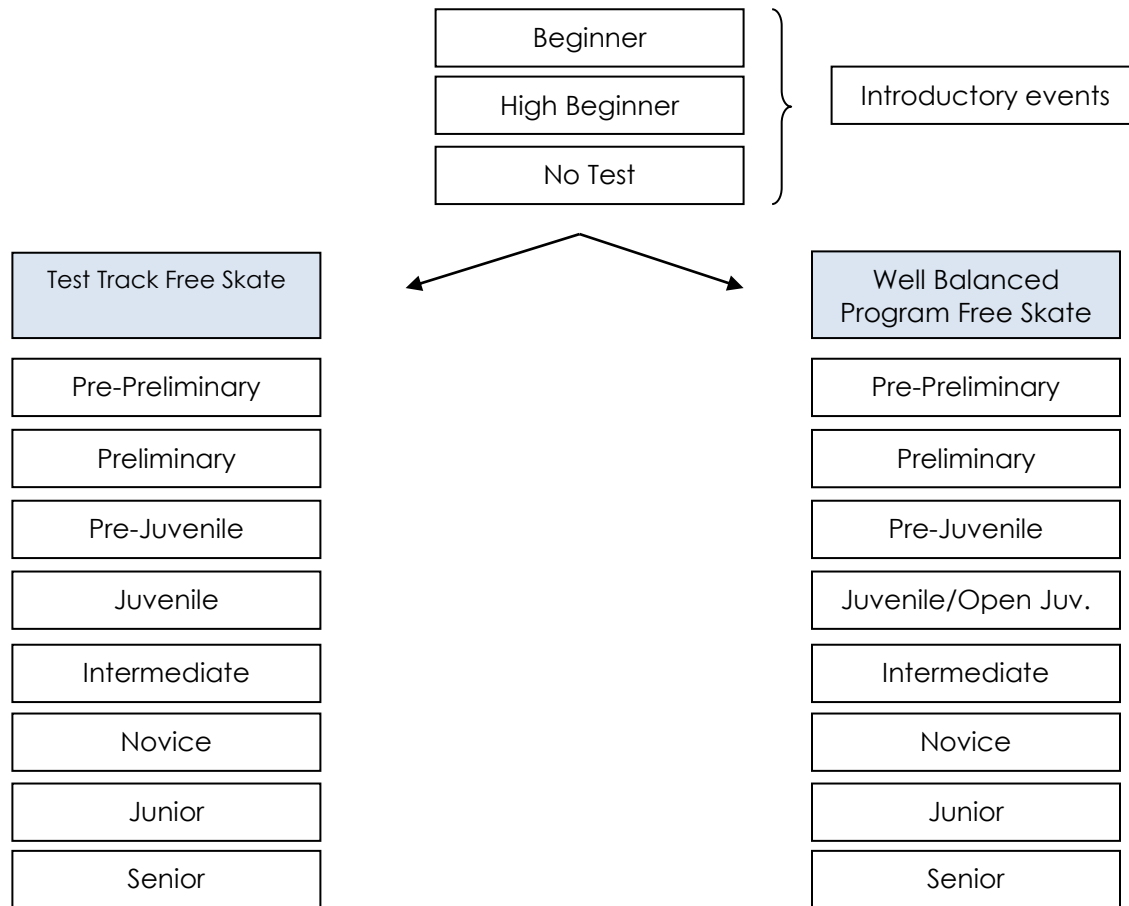
### **ADDITIONAL INFORMATION:**

The competition is open to the public at no charge. The concession area will be open, serving hot food, hot and cold beverages, and snacks throughout the competition.

## SINGLES FREE SKATING EVENTS

See current rulebook or click [here](#) for current rules and requirements.

Illustration of Singles Free Skating Events:





## U.S. Figure Skating Nonqualifying Competitions

### EVENT: Basic Elements Event: SNOWPLOW SAM – BASIC 8

Format choice of the host: Each skater will perform each element when directed by a judge or referee or have the option to perform one element at a time in the order listed below (no excessive connecting steps). Referee driven format examples: all skaters perform first element before moving on to the next and so on, or each skater performs all of the required elements before moving on to the next skater.

- To be skated on 1/3 to 1/2 ice
- No music
- **All elements must be skated in the order listed**

Level	Time	Skating rules/standards
Snowplow Sam 1-3	1:00 max.	<ol style="list-style-type: none"> <li>1. March followed by a two-foot glide and dip</li> <li>2. Forward two-foot swizzles, 2-3 in a row</li> <li>3. Forward snowplow stop</li> <li>4. Backward wiggles, 2-6 in a row</li> </ol>
Basic 1	1:00 max.	<ol style="list-style-type: none"> <li>1. Forward two-foot glide and dip</li> <li>2. Forward two-foot swizzles, 6-8 in a row</li> <li>3. Forward snowplow stop</li> <li>4. Backward wiggles, 6-8 in a row</li> </ol>
Basic 2	1:00 max.	<ol style="list-style-type: none"> <li>1. Forward one-foot glide, either foot</li> <li>2. Forward alternating ½ swizzle pumps in a straight line, 2-3 each foot</li> <li>3. Moving snowplow stop</li> <li>4. Two-foot turn in place, forward to backward</li> <li>5. Backward two-foot swizzles, 6 - 8 in a row</li> </ol>
Basic 3	1:00 max.	<ol style="list-style-type: none"> <li>1. Forward stroking</li> <li>2. Forward ½ swizzle pumps on a circle, either clockwise or counter clockwise, 4-6 consecutive</li> <li>3. Forward slalom</li> <li>4. Backward one-foot glide, either foot</li> <li>5. Two-foot spin – minimum three revolutions</li> </ol>
Basic 4	1:00 max.	<ol style="list-style-type: none"> <li>1. Standstill forward outside three-turn, right and left</li> <li>2. Forward outside edge on a circle, clockwise or counter clockwise</li> <li>3. Forward crossovers, 4-6 consecutive, both directions</li> <li>4. Backward stroking, 4-6 strokes</li> <li>5. Backward snowplow stop, right or left</li> </ol>
Basic 5	1:00 max.	<ol style="list-style-type: none"> <li>1. Backward outside edge on a circle, clockwise or counterclockwise</li> <li>2. Backward crossovers, 4-6 consecutive, both directions</li> <li>3. Basic one-foot spin, free leg held to side of spinning leg - minimum three revolutions</li> <li>4. Side toe hop, either direction</li> <li>5. Hockey stop</li> </ol>
Basic 6	1:00 max.	<ol style="list-style-type: none"> <li>1. Standstill forward inside three-turn, right and left</li> <li>2. Bunny Hop</li> <li>3. Forward spiral on a straight line, right or left</li> <li>4. Lunge, right or left</li> <li>5. T-stop, right or left</li> </ol>
Basic 7	1:00 max.	<ol style="list-style-type: none"> <li>1. Standstill forward inside open mohawk, right to left and left to right</li> <li>2. Ballet jump, either direction</li> <li>3. Back crossovers to a back outside edge landing position, clockwise and counter clockwise</li> <li>4. Forward inside pivot</li> </ol>
Basic 8	1:00 max.	<ol style="list-style-type: none"> <li>1. Moving forward outside or forward inside three-turns, right and left</li> <li>2. Waltz jump (from a standstill)</li> <li>3. Mazurka, either direction</li> <li>4. 1 Combination move, clockwise <u>or</u> counter clockwise, two forward</li> </ol>

		<p>crossovers into forward inside mohawk, step down, cross behind, step into one back crossover and step to a forward inside edge</p> <p>5. Beginning one-foot upright spin, free foot held to side of spinning leg or crossed position - minimum three revolutions</p>
--	--	---



## U.S. Figure Skating Nonqualifying Competitions

### **EVENT:** Free Skate 1-6 Compulsory Event

Format: In simple program form, using a limited number of connecting steps, the skating order of the required elements is optional

- To be skated on ½ ice
- No music is allowed
- The skater must demonstrate the required elements and may use any additional elements from previous levels
- A .2 deduction will be taken for each element performed from a higher level
- Time: 1:15 or less

Level	Time	Skating rules / standards
Free Skate 1	1:15 max.	<ol style="list-style-type: none"><li>1. Advanced forward stroking, 4-6 consecutive</li><li>2. Backward outside three-turns, right and left</li><li>3. One-foot upright scratch spin from backward crossovers - minimum three revolutions</li><li>4. Waltz jump from backward crossovers</li><li>5. Half flip jump</li></ol>
Free Skate 2	1:15 max.	<ol style="list-style-type: none"><li>5. Forward outside or inside spiral, right or left</li><li>6. Waltz three's, right or left, 2-3 sets</li><li>7. Beginning back spin, entry optional – minimum two revolutions</li><li>8. Waltz jump, side toe hop, waltz jump sequence</li><li>9. Toe loop jump</li></ol>
Free Skate 3	1:15 max.	<ol style="list-style-type: none"><li>1. Forward crossovers in a figure 8</li><li>2. Backward inside three-turns, right and left</li><li>3. Back spin - minimum three revolutions</li><li>4. Salchow jump</li><li>5. Waltz jump/toe loop or Salchow/toe loop jump combination</li></ol>
Free Skate 4	1:15 max.	<ol style="list-style-type: none"><li>6. Forward power 3's, 2-3 consecutive sets, right or left</li><li>7. Sit spin - minimum three revolutions</li><li>8. Loop jump</li><li>9. Waltz jump/loop jump combination</li></ol>
Free Skate 5	1:15 max.	<ol style="list-style-type: none"><li>6. Camel spin - minimum three revolutions</li><li>7. Forward upright spin to back upright spin - minimum three revolutions each foot</li><li>8. Loop/loop jump combination</li><li>9. Flip jump</li></ol>
Free Skate 6	1:15 max.	<ol style="list-style-type: none"><li>6. Five step mohawk sequence - one set alternating pattern (refer to Basic Skills Curriculum Free skate 6)</li><li>7. Camel, sit spin combination - minimum of four revolutions total</li><li>8. Split jump or stag jump</li><li>9. Waltz jump, ½ loop, Salchow jump sequence</li><li>10. Lutz jump</li></ol>







## U.S. Figure Skating Nonqualifying Competitions

---

### **EVENT:** Introductory Levels Compulsory Event

Format: In simple program form, using a limited number of connecting steps, the skating order of the required elements is optional

- To be skated on ½ ice
- No music is allowed
- The skater must demonstrate the required elements and may use any additional elements from previous levels
- A 0.2 deduction will be taken for each element performed from a higher level
- *Skaters may have the option to skate one level higher in compulsories than their free skate program*

Level	Time	Skating rules/standards
Beginner	1:15 max.	5. Waltz jump 6. ½ jump of choice 7. Forward two-foot or one-foot spin, minimum three revolutions (free leg position optional) 8. Forward or backward spiral
High Beginner	1:15 max.	10. Toe loop jump 11. Salchow jump 12. Forward scratch spin - minimum three revolutions 13. Forward or backward spiral
No-Test	1:15 max.	6. Loop jump 7. Jump combination to include a toe loop (may not use a loop or Axel) 8. Solo spin - sit <u>or</u> camel spin - minimum three revolutions 9. Spiral sequence, must include a forward and backward spiral. Additional spirals and balance moves may be included.





## U.S. Figure Skating Nonqualifying Competitions

---

### EVENT: COMPULSORY MOVES

General event parameters:

1. Basic Skills – Juvenile: Elements skated on ½ ice
2. Elements may be performed only once
3. Music is not allowed

Level	Time	Skating rules/standards
Pre – Preliminary	1:15 max.	10. Single flip <b>(for competitions held before December 31, 2014)</b> Single Toe Loop <b>(for competitions held after January 1, 2015)</b> 11. Jump combination: single/single (no Axel) 12. Sit spin or camel spin - minimum three revolutions 13. Spiral sequence with one forward spiral and one backward spiral (any edge)
Preliminary	1:15 max.	10. Single Lutz 11. Jump combination: single/single (may include Axel) 12. Back upright spin - minimum three revolutions 13. Forward inside spiral



## U.S. Figure Skating Nonqualifying Competitions

### EVENT: BASIC PROGRAM EVENT: SNOWPLOW SAM – BASIC 8

Format: The skating order of the required elements is optional. The elements are not restricted as to the number of times the element is executed or length of glides, number of revolutions, etc., unless otherwise specified. Vocal music is allowed.

- To be skated on full ice
- The skater may use elements from a previous level
- A 0.2 deduction will be taken for each element performed from a higher level

Level	Time	Skating rules/standards
Snowplow Sam 1-3	1:00 +/-10 max.	9. March followed by a two-foot glide and dip 10. Forward two-foot swizzles, 2-3 in a row 11. Forward snowplow stop 12. Backward wiggles, 2-6 in a row
Basic 1	1:00 +/-10 max.	14. Forward two-foot glide and dip 15. Forward two-foot swizzles, 6-8 in a row 16. Forward snowplow stop 17. Backward wiggles, 6-8 in a row
Basic 2	1:00 +/-10 max.	10. Forward one-foot glide, either foot 11. Forward alternating ½ swizzle pumps in a straight line, 2-3 each foot 12. Moving snowplow stop 13. Two-foot turn in place, forward to backward 14. Backward two-foot swizzles, 6 - 8 in a row
Basic 3	1:00 +/-10 max.	14. Forward stroking 15. Forward ½ swizzle pumps on a circle, either clockwise or counter clockwise, 4-6 consecutive 16. Forward slalom 17. Backward one-foot glide, either foot 18. Two-foot spin, minimum three revolutions
Basic 4	1:00 +/-10 max.	14. Standstill forward outside three-turn, right and left 15. Forward crossovers, 4-6 consecutive both directions 16. Backward stroking, 4-6 strokes 17. Backward snowplow stop, right or left
Basic 5	1:00 +/-10 max.	11. Backward crossovers, 4-6 consecutive, both directions 12. Basic one-foot spin, free leg held to side of spinning leg, minimum three revolutions 13. Side toe hop, either direction 14. Hockey stop
Basic 6	1:00 +/-10 max.	6. Standstill forward inside three-turn, right and left 7. Bunny Hop 8. Forward spiral on a straight line, right or left 9. Lunge, right or left 10. T-stop, right or left
Basic 7	1:00 +/-10 max.	5. Standstill forward inside open Mohawk, right to left and left to right 6. Ballet Jump, either direction 7. Back crossovers to a back outside edge landing position, clockwise and counter clockwise 8. Forward inside pivot
Basic 8	1:00 +/-10 max.	4. Moving forward outside or forward inside three-turns, right and left 5. Waltz jump (from at standstill) 6. Mazurka, either direction 4. 1 Combination move, clockwise <u>or</u> counter clockwise – two forward crossovers into a forward inside Mohawk, step down, cross behind, step into

This event is a standard U.S. Figure Skating Nonqualifying Competition  
LG/10-1-14



		<p>one back crossover and step to a forward inside edge</p> <p>5. Beginning one-foot upright spin, free foot held to side of spinning leg or crossed position -minimum three revolutions</p>
--	--	--



## U.S. Figure Skating Nonqualifying Competitions

### **EVENT:** Free Skate 1-6 Program Event

Format: The skating order of the required elements is optional. The elements are not restricted as to the number of times an element is executed, length of glides, number of revolutions, etc., unless otherwise stated. Connecting moves and steps should be demonstrated throughout the program. Vocal music is allowed.

- To be skated on full ice
- The skater must demonstrate the required elements and may use but is not required to use any additional elements from previous levels
- A 0.2 deduction will be taken for each element performed from a higher level
- Time 1:30+/-10sec

Level	Time	Skating rules / standards
Free Skate 1	1:30+/-10 sec	5. Advanced forward stroking, 4-6 consecutive 6. One-foot upright scratch spin from backward crossovers, minimum three revolutions 7. Waltz jump from backward crossovers 4. Half flip jump
Free Skate 2	1:30+/-10 sec	18. Forward outside spiral, right or left 19. Beginning back spin – entry optional, minimum two revolutions 20. Waltz jump, side toe hop, waltz jump sequence 21. Toe loop jump
Free Skate 3	1:30+/-10 sec	6. Forward crossovers in a figure 8 7. Back spin, minimum three revolutions 8. Salchow jump 9. Waltz jump-toe loop or Salchow-toe loop jump combination
Free Skate 4	1:30+/-10 sec	19. Forward power 3's, 2-3 consecutive sets, right or left 20. Sit spin, minimum three revolutions 21. Loop jump 22. Waltz jump-loop jump combination
Free Skate 5	1:30+/-10 sec	18. Camel spin, minimum three revolutions 19. Forward upright spin to back upright spin, minimum three revolutions each foot 20. Loop-loop jump combination 21. Flip jump
Free Skate 6	1:30+/-10 sec	15. Camel, sit spin combination, minimum of four revolutions total 16. Split jump or stag jump 17. Waltz jump, ½ loop, Salchow jump sequence 18. Lutz jump



## U.S. Figure Skating Nonqualifying Competitions

**EVENT:** Introductory Levels Free Skate Program - Beginner, High Beginner and No Test Levels

General event parameters:

4. Skaters will skate to the music of their choice. Vocal music is permitted at all levels.
5. Level will be determined by the highest free skate test passed. Skaters may compete at the highest level they have passed, or skate up to one level higher.
6. Minimum number of spin revolutions are in parentheses following the spin description. Revolutions must be in position.

Level	Jumps	Spins	Step Sequences	Qualifications
Beginner 1:40 Maximum	<i>Max. 5 jump elements:</i> <ul style="list-style-type: none"> <li>Jumps with no more than one-half rotation (front to back or back to front).</li> <li>Max. 2 jump sequences</li> <li>Max. 2 of any same jump</li> </ul>	<i>Max. 2 spins:</i> <ul style="list-style-type: none"> <li>Two upright spins, no change of foot, no flying entry (Min. 3 revolutions)</li> </ul>	Connecting moves and steps should be demonstrated throughout the program	Skaters may not have passed tests higher than U.S. Figure Skating Basic Skills free skating badge tests
High Beginner 1:40 Maximum	<i>Max. 5 jump elements:</i> <ul style="list-style-type: none"> <li>Jumps with no more than one-half rotation (front to back or back to front including half-loop)</li> <li>Single rotation jumps: Salchow and toe loop only.</li> <li>Max. 2 jump combinations or sequences</li> <li>Max. 2 of any same type jump.</li> </ul>	<i>Max. 2 spins:</i> <ul style="list-style-type: none"> <li>Two upright spins, change of foot optional, no flying entry (Min. 3 revolutions)</li> </ul>	Connecting moves and steps should be demonstrated throughout the program	Skaters may not have passed tests higher than U.S. Figure Skating Basic Skills free skating badge tests
No-Test 1:40 Maximum	<i>Max. 5 jump elements:</i> <ul style="list-style-type: none"> <li>Single jumps, with the exception of the single Axel, are allowed</li> <li>Maximum of 2 jump combinations or sequences</li> <li>Jump combinations limited to 2 jumps</li> <li>Jump sequences limited to a maximum of 3 single jumps (half-loop is not considered a single jump)</li> </ul>	<i>Max. 2 spins:</i> <ul style="list-style-type: none"> <li>Spins may change feet and/or position</li> <li>Spins may start with a fly</li> <li>Minimum 3 revs.</li> <li>Spins must be of a different character (For definition see rule 4103E)</li> </ul>	<ul style="list-style-type: none"> <li>Step sequence*</li> <li>Must use one-half the ice surface</li> <li>Moves in the field and spiral sequences are permitted but will not be counted as elements.</li> <li>Jumps may be included in the</li> </ul>	

	<p>at this level and may be performed without counting toward jump limit)</p> <ul style="list-style-type: none"> <li>• No single Axels, double jumps or triple jumps</li> </ul>		step sequence	
--	---	--	---------------	--



## U.S. Figure Skating Nonqualifying Competitions

### EVENT: Test Track Free Skate

#### General event parameters:

7. Skaters may not enter both a Well-Balanced Free Skate event and a Test Track Free Skate event at the same nonqualifying competition.
8. Skaters will skate to the music of their choice. Vocal music is permitted at all levels.
9. Level will be determined by the highest Free Skate test passed. Skaters may compete at the highest level they have passed, or "skate up" to one level higher.
10. Minimum number of spin revolutions are in ( ) following the spin description. Revolutions must be in position.
11. The following deductions will be taken:
  - 0.1 from each mark for each technical element included that is not permitted in the event description.
  - 0.2 from the technical mark for each extra element included.
  - 0.1 from the technical mark for any spin that is less than the required minimum revolutions.

Level	Jumps	Spins	Step Sequences	Qualifications
Pre-Preliminary 1:30 +/- 10 sec.	<i>Maximum of 5 jump elements:</i> <ul style="list-style-type: none"> <li>Jumps with not more than one-half rotation (<i>front to back or back to front including half-loop</i>)</li> <li>Single rotation jumps: Salchow, toe loop and loop only.</li> <li>Max. 2 jump combinations or sequences</li> <li>Max. 2 of any same type jump</li> </ul>	<i>Maximum of 2 spins:</i> <ul style="list-style-type: none"> <li>Two spins of a different nature, one position only. No change of foot, no flying entry. (Min. 3 revolutions)</li> </ul>	Connecting moves and steps should be demonstrated throughout the program	Skaters may not have passed tests higher than U.S. Figure Skating pre-preliminary free skate test
Preliminary 1:30 +/- 10 sec.	<i>Maximum of 5 jump elements:</i> <ul style="list-style-type: none"> <li>Jumps with not more than one rotation (no Axels).</li> <li>Max. 2 jump combinations or sequences</li> <li>Max. 2 of any same type jump</li> </ul>	<i>Maximum of 2 spins:</i> <ul style="list-style-type: none"> <li>One spin in one position; no change of foot, no flying entry. (Min. 3 revolutions)</li> <li>One spin consisting of a front scratch to back scratch; exit on spinning foot not mandatory. (Min. 3 revolutions per foot)</li> </ul>	Connecting moves and steps should be demonstrated throughout the program	Skaters must have passed at least the U.S. Figure Skating pre-preliminary free skate test but may not have passed tests higher than the preliminary free skate test





## U.S. Figure Skating Nonqualifying Competitions

### EVENT: Well Balanced Program Free Skate

#### General event parameters:

12. Skaters may not enter both a Well Balanced Free Skate event and a Test Track Free Skate event at the same nonqualifying competition.
13. Skaters will skate to the music of their choice. Vocal music is permitted for pre-preliminary – intermediate.
14. Level will be determined by the highest free skate test passed. Skaters may compete at the highest level they have passed, or skate up to one level higher.
15. Either IJS or the 6.0 judging system may be used for this event.
16. All relevant and appropriate IJS rules will be used. Coaches and athletes are expected to be aware of these rules by reading the documents on [www.usfigureskating.org](http://www.usfigureskating.org), under "Technical Information," then "Singles/Pairs"

Level	Time	Jumps	Spins	Step Sequences
Pre-Preliminary	1:40 max.  Vocal music permitted	Maximum of 5 jump elements: a) Any single jumps, including Axel, allowed. b) Max. 2 jump combinations or sequences c) Jump combinations are limited to 2 jumps. d) Number of jumps in a jump sequence is limited to a max. of 3 single jumps (½ loop is not considered a single jump.) e) Axel may be repeated as an individual jump, as part of a jump combination or jump sequence. Max of 2 Axels. f) Double or triple jumps are not allowed.	Maximum of 2 spins: a) Spins must be of a different nature b) Spins may change feet and/or position. c) Spins may start with a fly. d) Min. of 3 revolutions	One step sequenced that must use ½ of the ice surface.
Preliminary	1:30 +/- 10 sec.  Vocal music permitted	Maximum of 5 jump elements: a) One must be an Axel or waltz-jump. b) Max. 2 jump combinations or sequences c) Jump combinations limited to 2 jumps d) Number of jumps in a jump sequence is limited to a max. of 3 single jumps (½ loop is not considered a single jump.) e) Only 2 different double jumps may be attempted, selected from: double Salchow, double toe-loop, double loop) f) Axel and no more than 2 different double jumps may be repeated as individual jumps, as part of jump combinations or jump sequences. g) Max. of 2 Axels or any double jump. h) Double flips, double Lutzes, double Axels or triple jumps are not allowed.	Maximum of 2 spins: a) Spins must be of a different nature b) Spins may change feet and/or position. c) Spins may start with a fly. d) Min. of 3 revolutions	One step sequenced that must use ½ of the ice surface.





## U.S. Figure Skating Nonqualifying Competitions

### **EVENT:** Basic Skills Showcase Events

Format: Showcase groups will be divided by number of entries and ages if possible. Vocal music is permitted and 6.0 judging will be used. Deductions will be made for skaters including technical elements not permitted in the event description.

Showcase categories:

- Light entertainment: Showcase program emphasizing such choreographic expressive qualities such as comedy, love and mime while incorporating skating skills.
- Duets: Theatrical/artistic performances by any competitors.

NOTE: Skaters may enter only one each duet.

General event parameters:

Show costumes are permitted, as long as they do not touch or drag on the ice. Props and scenery must be placed and removed by unaided singles and duet competitors within one minute and by unaided ensemble contestants within two minutes for setup and two minutes for removal. A 0.2 deduction will be assessed by the referee against each judges' mark for each five seconds in excess of the time allowed for the performance, for handling props and scenery and for scenery assistance.

Performances will be judged from an entertainment standpoint for theatrical and artistic qualities. Technical skating skills and difficulty will not be rewarded; however, skating must be the major element of the performance and be of sufficient quality to support the selected theatrical elements. Unintended falls, poorly executed skating elements and obvious losses of control will reduce contestant's marks. Jump difficulty is not rewarded in showcase; therefore jumps, if choreographed, should be performed with style, flow and confidence. Theatrical elements evaluated will include energy, poise, acting, pantomime, eye contact, choreography, form/extension and the use of props and ice.

Current guidelines and procedures for non-qualifying showcase competitions can be found at [www.usfigureskating.org](http://www.usfigureskating.org), under "Programs" on the National Showcase page.

### **Interpretative Events and Levels**

LEVEL	ELEMENTS	QUALIFICATIONS	PROGRAM LENGTH
Basic 1-8	Elements only from Basic 1-8 curriculum	May not have passed any higher than Basic 8 level.	Time 1:00 Max
Free skate 1-6/ Limited beginner/ Beginner/Adult 1-4	3 jump maximum, ½ rotation jumps only, plus the following full rotation jumps: Salchow and toe loop.	May not have passed any official U.S. Figure Skating free skate tests.	Time: 1:30 Max
No-test/ Pre-preliminary/ Adult pre-bronze	3 jump maximum. No Axels or double jumps permitted.	Must have passed no higher than U.S. Figure Skating pre-preliminary or adult pre-bronze free skate test.	Time: 1:30 Max
Preliminary/ Adult bronze	3 jump maximum. Axels are permitted, but no double jumps allowed.	Must have passed no higher than U.S. Figure Skating preliminary free skate or adult bronze test.	Time: 1:40 Max





## U.S. Figure Skating Nonqualifying Competitions

### EVENT: Showcase Events – Duet Events

Format:

- Duets are theatrical or artistic performances by any competitors.
- Props and scenery ARE permitted.

General event parameters:

1. Level will be determined by the highest free skate or dance (solo or partnered) test passed. Skaters may compete at the highest level they have passed, or skate up to one level higher.
2. The determination of level will be based upon test requirement at the entry deadline

Current guidelines and procedures for non-qualifying showcase competitions can be found at [www.usfigureskating.org](http://www.usfigureskating.org), under "Programs" on the National Showcase page.

	Event	Must have passed(dance tests refer to solo or partnered standard track)	Must not have passed(dance tests refer to solo or partnered standard track)	Age	Time
<b>Duets (Duets must compete at the highest test level of the two skaters)</b>	Beginner, High Beginner, No Test*  Note: these levels do not qualify for National Showcase	-	Pre-Preliminary Free Skate	No Age restriction	1:30 max
	Pre-Preliminary*  Note: this level does not qualify for National Showcase	-	Preliminary Free Skate	No Age restriction	1:30 max
	Preliminary	Preliminary Free Skate	Pre-Juvenile Free Skate	No minimum age (max age 20)	1:40 max



## NONQUALIFYING COMPETITION ENTRY FORM

Name:		U.S. Figure Skating #	
Date of Birth:		Sex:	
Address:			
Email:			
Cell phone:			
Name of parent or guardian:			
Highest MITF test:		Highest free skate test:	
Highest dance test:		Highest pairs test:	
Home figure skating club:			
Coach name:		Coach U.S. Figure Skating#	
Coach email:		Coach cell phone:	

**Please mark an "X" in the box next to events you are entering.** The entry fee is \$35 for the first event and \$15 for each additional event.

### Basic Skills Events:

Compulsory Basic Elements:	x	Basic Program Event:	x	Basic Skills Showcase Events	x
SS1		SS1		SS1	
SS2		SS2		SS2	
SS3		SS3		SS3	
Basic 1		Basic 1		Basic 1	
Basic 2		Basic 2		Basic 2	
Basic 3		Basic 3		Basic 3	
Basic 4		Basic 4		Basic 4	
Basic 5		Basic 5		Basic 5	
Basic 6		Basic 6		Basic 6	
Basic 7		Basic 7		Basic 7	
Basic 8		Basic 8		Basic 8	
Freeskate 1		Freeskate 1		Freeskate 1	
Freeskate 2		Freeskate 2		Freeskate 2	
Freeskate 3		Freeskate 3		Freeskate 3	
Freeskate 4		Freeskate 4		Freeskate 4	
Freeskate 5		Freeskate 5		Freeskate 5	
Freeskate 6		Freeskate 6		Freeskate 6	

This event is a standard U.S. Figure Skating Nonqualifying Competition  
LG/10-1-14



**FREE SKATE EVENTS:**

Introductory Events	X	Test Track Events	X	Well Balanced Program Events	X
Beginner		Pre-Preliminary		Pre-Preliminary	
High Beginner		Preliminary		Preliminary	
No Test					

**COMPULSORY MOVES:**

Compulsory Moves	X
Beginner	
High Beginner	
No Test	
Pre-Preliminary	
Preliminary	

**SHOWCASE:**

Showcase Light Entertainment	X
Beginner	
High Beginner	
No Test	
Pre-Preliminary	
Preliminary	

**SHOWCASE:**

Showcase Duets	X
Beginner	
High Beginner	
No Test	
Pre-Preliminary	
Preliminary	

First Event	\$ _____
Additional Event	\$ _____
Additional Event	\$ _____
Additional Event	\$ _____
Additional Event	\$ _____
Practice Ice	\$ _____
<b>Total:</b>	<b>\$ _____</b>

**The completed entry form, with fees, must be postmarked no later than 5/1/2015.**

Make check or money order payable to: MCFSC and mail to:

**MCFSC**

**Attn: Basic Skills Competition**

**PO Box 735**

**Minot, ND 58702**

For additional information call:

Erin Holt: 701-720-8973

Shandra Stai: 701-240-5050

Tracey Deren: 701-500-2589

**ENTRY FEES ARE NOT REFUNDABLE AFTER THE ENTRY DEADLINE UNLESS AN EVENT IS CANCELED.**

Certification of Competitor: The Competitor is eligible to enter the events checked. It is agreed that the competitor and family holds the MCFSC and the MAYSA Arena harmless from any and all liability during practice or the competition and from any and all liability for damages to or loss of property.

Instructor/coach has verified that the skater/team is entered in the correct level.

A Program Director/Club Official has verified that the skater/team is in good standing.

<b>Parent/Guardian Signature</b> _____	<b>Date</b> _____
<b>Competitor Signature</b> _____	<b>Date</b> _____
<b>Instructor/Coach Signature</b> _____	<b>Date</b> _____
<b>Program Director/Club Official</b> _____	<b>Date</b> _____

PHOTO RELEASE: We may have pictures from the competition that we would like to post on the MCFSC website and/or in promotional materials. In order to post your child's (under 18) photograph on the club website or publication we need your consent. I,

\_\_\_\_\_ give consent that a photo of (skater's name) may be included on the MCFSC website and/or promotional materials.

Parent's or Legal Guardian's Signature \_\_\_\_\_ Date \_\_\_\_\_

This event is a standard U.S. Figure Skating Nonqualifying Competition  
LG/10-1-14

