

FALLING LEAVES CLASSIC

Hosted by the Skating Club of Novi

October 3, 2015



**Sanctioned by U.S. Figure Skating & Skate Canada
NOVI ICE ARENA
42400 Lidstrom Drive
Novi, MI 48375**

**CHIEF REFEREE: BARRY DOREN
CHIEF ACCOUNTANT: DON KORTE**

***FOR ADDITIONAL INFORMATION CONTACT:
JEFF CURLEY
4665 DRIFTWOOD DRIVE
COMMERCE TOWNSHIP, MI 48382
(586) 817-9879
jpsteelman27@gmail.com***

ENTRY DEADLINE: September 9, 2015

****Sanctioned by US Figure Skating - #20538****

****Sanctioned by Skate Canada****

This event is a standard U.S. Figure Skating Non-qualifying Competition



Falling Leaves Classic

Hosted by the Skating Club of Novi

October 3, 2015

The 2015 Falling Leaves Classic will be conducted in accordance with the rules and regulations of U.S. Figure Skating, as set forth in the current rulebook, as well as any pertinent updates which have been posted on the U.S. Figure Skating website.

This competition is open to all eligible, restricted, reinstated or readmitted persons as defined by the Eligibility Rules, and is a currently registered member of a U.S. Figure Skating member club, Skate Canada, a collegiate club or an individual member in accordance with the current rulebook. Please refer to the current rulebook for non-U.S. Citizens.

SERIES INFORMATION: The 2015 Falling Leaves Classic is a participating event in the Tri State Council Series.

ELIGIBILITY/TEST LEVEL:

Test level: Competition level is the highest test passed as of the entry deadline in the discipline the skater is entering. Entrants may skate one level above that for which they qualify, but they may not skate down in any event. Skaters who placed in the top four in a final round of their last qualifying competition in their divisions must move up one level, except for novice and higher.

Age restrictions/requirements: Skaters entering juvenile free skate events (Well Balanced Program) must be under 14 years of age at the close of entries. Skaters entering open juvenile free skate events (Well Balanced Program), must be at least 14 years of age at the close of entries.

Skaters entering beginner-pre-juvenile events will be divided as closely as possible by age should the number of entries warrant more than one group.

ENTRIES:

Online Registration at www.sk8stuff.com is preferred. Checks and voucher still need to be printed and mailed. All entries must be postmarked no later than August 21, 2015. Entries will be processed in the orders received. Time limitations may require the LOC to limit the number of entries. **Late entries may be accepted if space permits, but will include an additional late fee of \$25.** Entries are per person, per event, U.S. dollars. **Any change to the skating level or event after the deadline is subject to a \$35 administration fee.** A \$30 service fee will be assessed for returned/NSF check. If these fees apply they must be paid before the skater competes. Schedules will be posted on www.sk8stuff.com.

- \$80 – First Event (6.0 Judging System)
- \$40 – Each Additional Event
- All Events will be Final Rounds
- All Test Track Events will participate in the Tri States Council Championship Series with the opportunity to earn points towards season awards.

Entry forms or vouchers must be filled out completely and mailed along with the entry fees payable to **Skating Club of Novi**. Mail to:

FALLING LEAVES CLASSIC
c/o Jeff Curley
4665 Driftwood Drive
Commerce Township, MI 48382

REFUND POLICY: Entry fees will not be refunded after August 21, 2015 unless no competition exists or the event is canceled. There will be no refunds for medical withdrawals. The online processing fees are not refundable. Checks returned for non-sufficient will be issued a \$30 fee. Payment of the fee will be required before the skater is allowed to participate in practice ice or events. Notification of competition and practice ice times will be available on www.sk8stuff.com.

FACILITIES: The competition will be held at Novi Ice Arena, 42400 Nick Lidstrom Drive, Novi, MI 48375, which has two ice surfaces each measuring 200' x 85'. Parking, dressing rooms and snack bar facilities are available at the arena. A large vendor exhibition area will be inside the arena.

MUSIC: The official competition music must be turned in at the registration table at the time of check-in. A duplicate CD should be readily available. Music may be picked up at the registration table following each event. Every reasonable care will be taken, but the Skating Club of Novi cannot be responsible for CDs left at the end of the competition. Please have separate CDs for practice and competition. CDs must be clearly marked with the competitor's name and event. CDs should have one track only. No CD/RW discs.

LIABILITY: U.S. Figure Skating, The Skating Club of Novi and Novi Ice Arena accept no responsibility for injury or damage sustained by any participant in this competition. This is in accordance with Rule 1600 of the official U.S. Figure Skating Rulebook.

JUDGING SYSTEM:

The 6.0 Majority Judging System will be used for ALL EVENTS.

REGISTRATION: Registration will be open one to two hours before the first event and run through the last event of the day. The registration table will be located downstairs at the skate rental counter. Competitors must check in at the registration desk at least one hour prior to their event.

PRACTICE ICE: Practice ice will be available to the competitors at a fee of \$12 per session. Practice ice information will be available on www.sk8stuff.com. Music will not be played on any practice session.

PHOTOGRAPHY/VIDEOGRAPHY: TBD

AWARDS: Medals will be awarded for first, second, third and fourth places.

OFFICIAL NOTICES: An official bulletin board will be maintained at the registration desk. It is the responsibility of each competitor, parent and coach to check the bulletin board frequently for any schedule changes and/or additional information. Skaters are requested to arrive one hour prior to the scheduled time of their event. A tentative schedule of events will be posted prior to the competition.

INFORMATION REGARDING COACHES:

U.S. Figure Skating Rule MR 5.11 Coach Registration

In order to be granted access to work within U.S. Figure Skating sanctioned activities, each coach must complete the following requirements on an annual basis by July 1:

A. Must be a current full member of U.S. Figure Skating - either through a member club or as an individual member;

B. Must complete the coach registration process through the U.S. Figure Skating Members Only site, submit proper payment for the annual registration fee of \$30 and, if 18 years of age or older, successfully pass the background screen.

C. Must complete the appropriate CER courses (A, B, C or D) depending on the highest level of students being coached as of July 1. See rule MR 5.12.

D. Must submit proof of current general liability insurance with limits of \$1 million per occurrence/\$5 million aggregate.

For Basic Skills ONLY coaches - Any person, 18 and older, instructing in a U.S. Figure Skating Basic Skills Program must have successfully passed the annual background screen and be registered as a Basic Skills instructor member.

The local organizing committee/club will have a list of compliant coaches who are cleared for a credential at the competition. Coaches will need to check in at the event registration desk and show a government issued photo I.D. to receive a credential.

If a coach cannot provide a photo I.D. and is not on the list or cannot produce the necessary documents, he or she will not be allowed a credential – no exceptions. We strongly urge *all* coaches to have their cards with them. Non-credentialed coaches will not be permitted in the designated coaching area at rink side during events including practice sessions. Coaching at U.S. Figure Skating events without proper registration is an ethics violation which is reported to U.S. Figure Skating and PSA.

For more information regarding Coach Compliance, please refer to:

<http://www.usfigureskating.org/Content/Coaching%20Compliance%20Toolkit.pdf>

CONTACT INFO: If you have questions, please contact Jeff Curley at jpsteelman27@gmail.com.

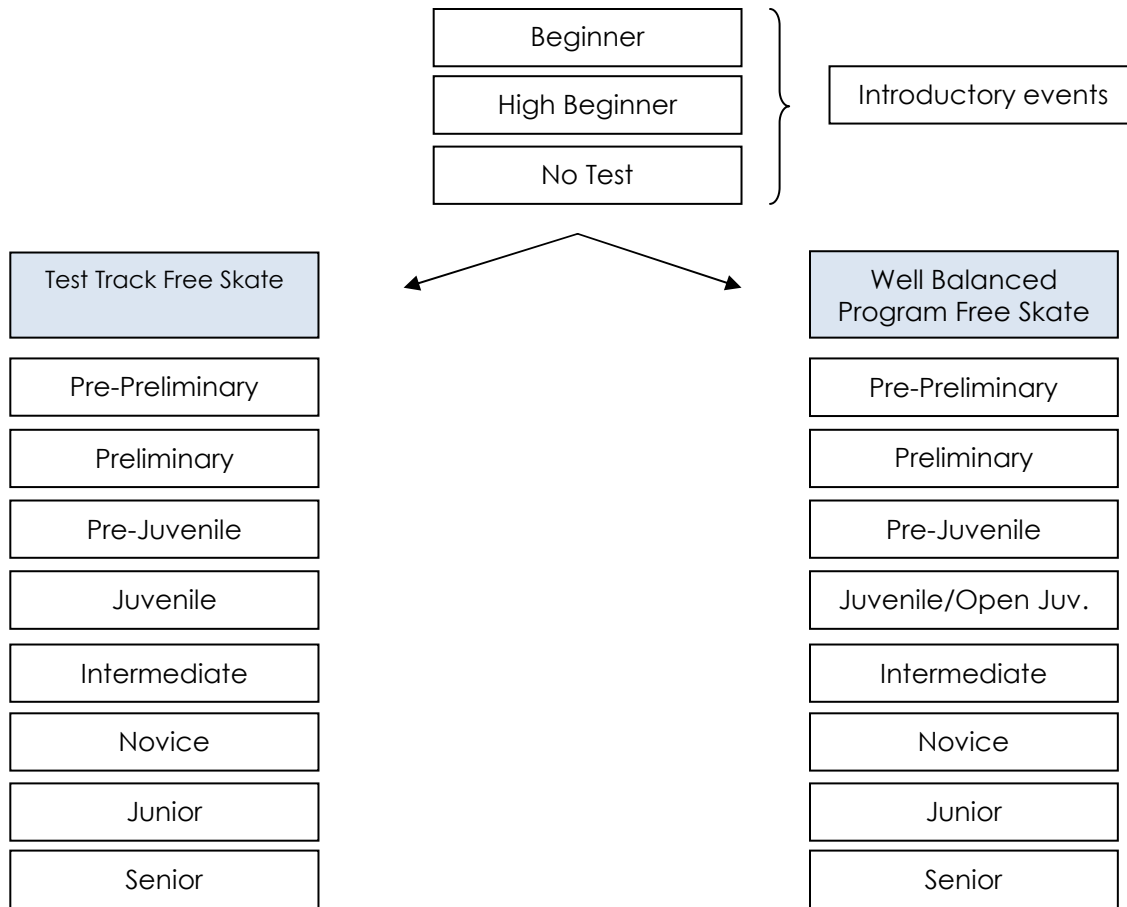
AREA HOTELS:

Double Tree Hotel*, 42100 Crescent Blvd., Novi, MI, (248)344-8800	1.7 miles from Arena
Courtyard by Marriott, 42700 11 Mile Rd., Novi, MI (248)380-1234	1.4 miles from Arena
Towneplace Suites, 42600 11 Mile Rd., Novi, MI (248)305-5533	1.4 miles from Arena
Extended Stay America, 21555 Haggerty, Novi, MI (248)305-9955	2.1 miles from Arena
Novi Sheraton, 21111 Haggerty, Novi, MI (248)349-4000	2.2 miles from Arena
Hampton Inn, 20600 Haggerty, Northville, MI (734)462-6270	2.4 miles from Arena
Embassy Suites, 19525 Victor Pkwy, Livonia, MI (734)462-6000	3.3 miles from Arena
Fairfield Inn, 17350 Fox Dr., Livonia, MI (734)953-8888	4.0 miles from Arena
Residence Inn, 17250 Fox Dr., Livonia, MI (734)462-4201	4.0 miles from Arena

SINGLES FREE SKATING EVENTS

See current rulebook or click [here](#) for current rules and requirements.

Illustration of Singles Free Skating Events:



EVENT: Introductory Levels Free Skate Program - Beginner, High Beginner and No Test Levels

General event parameters:

1. Skaters will skate to the music of their choice. Vocal music is permitted at all levels.
2. Level will be determined by the highest free skate test passed. Skaters may compete at the highest level they have passed, or skate up to one level higher.
3. Minimum number of spin revolutions are in parentheses following the spin description. Revolutions must be in position.

Level	Jumps	Spins	Step Sequences	Qualifications
Beginner 1:40 Maximum	<p><i>Max. 5 jump elements:</i></p> <ul style="list-style-type: none"> • Jumps with no more than one-half rotation (front to back or back to front). • Max. 2 jump sequences • Max. 2 of any same jump 	<p><i>Max. 2 spins:</i></p> <ul style="list-style-type: none"> • Two upright spins, no change of foot, no flying entry (Min. 3 revolutions) 	Connecting moves and steps should be demonstrated throughout the program	Skaters may not have passed tests higher than U.S. Figure Skating Basic Skills free skating badge tests
High Beginner 1:40 Maximum	<p><i>Max. 5 jump elements:</i></p> <ul style="list-style-type: none"> • Jumps with no more than one-half rotation (front to back or back to front including half-loop) • Single rotation jumps: Salchow and toe loop only. • Max. 2 jump combinations or sequences • Max. 2 of any same type jump. 	<p><i>Max. 2 spins:</i></p> <ul style="list-style-type: none"> • Two upright spins, change of foot optional, no flying entry (Min. 3 revolutions) 	Connecting moves and steps should be demonstrated throughout the program	Skaters may not have passed tests higher than U.S. Figure Skating Basic Skills free skating badge tests
No-Test 1:40 Maximum	<p><i>Max. 5 jump elements:</i></p> <ul style="list-style-type: none"> • Single jumps, with the exception of the single Axel, are allowed • Maximum of 2 jump combinations or sequences • Jump combinations limited to 2 jumps • Jump sequences limited to a maximum of 3 single jumps (half-loop is not considered a single jump at this level and may be performed without counting toward jump limit) • No single Axels, double jumps or triple jumps 	<p><i>Max. 2 spins:</i></p> <ul style="list-style-type: none"> • Spins may change feet and/or position • Spins may start with a fly • Minimum 3 revs. • Spins must be of a different character (For definition see rule 4103E) 	<ul style="list-style-type: none"> • Step sequence* • Must use one-half the ice surface • Moves in the field and spiral sequences are permitted but will not be counted as elements. • Jumps may be included in the step sequence 	

EVENT: Introductory Levels Compulsory Event

Format: In simple program form, using a limited number of connecting steps, the skating order of the required elements is optional

- To be skated on ½ ice
- No music is allowed
- The skater must demonstrate the required elements and may use any additional elements from previous levels
- A 0.2 deduction will be taken for each element performed from a higher level
- *Skaters may have the option to skate one level higher in compulsories than their free skate program*

Level	Time	Skating rules/standards
Beginner	1:15 max.	<ol style="list-style-type: none"> 1. Waltz jump 2. ½ jump of choice 3. Forward two-foot or one-foot spin, minimum three revolutions (free leg position optional) 4. Forward or backward spiral
High Beginner	1:15 max.	<ol style="list-style-type: none"> 1. Toe loop jump 2. Salchow jump 3. Forward scratch spin - minimum three revolutions 4. Forward or backward spiral
No-Test	1:15 max.	<ol style="list-style-type: none"> 1. Loop jump 2. Jump combination to include a toe loop (may not use a loop or Axel) 3. Solo spin - sit <u>or</u> camel spin - minimum three revolutions 4. Spiral sequence, must include a forward and backward spiral. Additional spirals and balance moves may be included.

EVENT: Test Track Free Skate

General event parameters:

1. Skaters may not enter both a Well-Balanced Free Skate event and a Test Track Free Skate event at the same nonqualifying competition.
2. Skaters will skate to the music of their choice. Vocal music is permitted at all levels.
3. Level will be determined by the highest Free Skate test passed. Skaters may compete at the highest level they have passed, or "skate up" to one level higher.
4. Minimum number of spin revolutions are in () following the spin description. Revolutions must be in position.
5. The following deductions will be taken:
 - 0.1 from each mark for each technical element included that is not permitted in the event description.
 - 0.2 from the technical mark for each extra element included.
 - 0.1 from the technical mark for any spin that is less than the required minimum revolutions.

Level	Jumps	Spins	Step Sequences	Qualifications
Pre-Preliminary 1:30 +/- 10 sec.	<i>Maximum of 5 jump elements:</i> <ul style="list-style-type: none"> • Jumps with not more than one-half rotation (<i>front to back or back to front including half-loop</i>) • Single rotation jumps: Salchow, toe loop and loop only. • Max. 2 jump combinations or sequences • Max. 2 of any same type jump 	<i>Maximum of 2 spins:</i> <ul style="list-style-type: none"> • Two spins of a different nature, one position only. No change of foot, no flying entry. (Min. 3 revolutions) 	Connecting moves and steps should be demonstrated throughout the program	Skaters may not have passed tests higher than U.S. Figure Skating pre-preliminary free skate test
Preliminary 1:30 +/- 10 sec.	<i>Maximum of 5 jump elements:</i> <ul style="list-style-type: none"> • Jumps with not more than one rotation (no Axels). • Max. 2 jump combinations or sequences • Max. 2 of any same type jump 	<i>Maximum of 2 spins:</i> <ul style="list-style-type: none"> • One spin in one position; no change of foot, no flying entry. (Min. 3 revolutions) • One spin consisting of a front scratch to back scratch; exit on spinning foot not mandatory. (Min. 3 revolutions per foot) 	Connecting moves and steps should be demonstrated throughout the program	Skaters must have passed at least the U.S. Figure Skating pre-preliminary free skate test but may not have passed tests higher than the preliminary free skate test
Pre-Juvenile 2:00 +/- 10 sec.	<i>Maximum of 5 jump elements:</i> <ul style="list-style-type: none"> • Jumps with not more than one rotation (no Axels). • Max. 2 jump combinations or sequences • Max. 2 of any same type jump 	<i>Maximum of 2 spins:</i> <ul style="list-style-type: none"> • One spin in one position, no change of foot (Min. 3 revolutions) • One combination spin: forward camel spin to forward sit spin; change of foot optional (Min. 6 revolutions). Spins may not fly. 	One step sequence fully utilizing ice surface	Skaters must have passed at least the U.S. Figure Skating preliminary free skate test but may not have passed tests higher than pre-juvenile free skate test

<p>Juvenile</p> <p>2:15 +/- 10 sec.</p>	<p><i>Maximum of 5 jump elements:</i></p> <ul style="list-style-type: none"> Any single jumps, including Axel, are permitted. Max. 2 jump combinations or sequences Max. 2 of any same type jump 	<p><i>Maximum of 2 spins:</i></p> <ul style="list-style-type: none"> One solo spin in one position, no change of foot (Min. 4 revolutions). One combination spin with one change of foot and at least one change of position, must include two of the basic spin positions. (Min. 4 revolutions per foot) <i>Only solo spin may fly</i> 	<p>One step sequence fully utilizing ice surface</p>	<p>Skaters must have passed at least the U.S. Figure Skating pre-juvenile free skate test but may not have passed tests higher than juvenile free skate test</p>
<p>Intermediate</p> <p>2:30 +/- 10 sec.</p>	<p><i>Maximum of 6 jump elements:</i></p> <ul style="list-style-type: none"> Any single jumps. Double jumps permitted: double Salchow and double toe loop. Maximum of 3 jump combinations or sequences Max. 2 of any same type jump 	<p><i>Maximum of 2 spins:</i></p> <ul style="list-style-type: none"> One must be a flying spin (min 5 revolutions), One must be a combination spin with at least one change of foot and at least one change of position (minimum 4 revolutions per foot). 	<p>One step sequence fully utilizing ice surface</p>	<p>Skaters must have passed at least the U.S. Figure Skating juvenile free skate test but may not have passed tests higher than intermediate free skate test</p>
<p>Novice</p> <p>Ladies: 3:00 +/- 10 sec. Men: 3:30 +/- 10 sec.</p>	<p><i>Maximum of 7 jump elements for men and 6 for ladies:</i></p> <ul style="list-style-type: none"> Any single jumps. Double jumps permitted: double Salchow, double toe loop and double loop. Maximum of 3 jump combinations or sequences Max. 2 of any same type jump 	<p><i>Maximum of 3 spins, of a different nature:</i></p> <ul style="list-style-type: none"> One must be a combination spin with at least one change of foot and at least one change of position (min 5 revs per foot) The other spins are the option of the skater (min 6 revolutions per foot) <i>All spins may fly</i> 	<p>One step sequence or spiral sequence fully utilizing ice surface</p> <p>(see rule 4104 & 4105 for remarks)</p>	<p>Skaters must have passed at least the U.S. Figure Skating intermediate free skate test but may not have passed tests higher than novice free skate test</p>
<p>Junior</p> <p>Ladies: 3:30 +/- 10 sec. Men: 4:00 +/- 10 sec.</p>	<p><i>Maximum of 8 jump elements for men and 7 for ladies:</i></p> <ul style="list-style-type: none"> Any single jumps. Double jumps permitted: double Salchow, double toe loop, double loop and double flip Maximum of 3 jump combinations or sequences Max. 2 of any same type jump 	<p><i>Maximum of 3 spins of a different nature:</i></p> <ul style="list-style-type: none"> One spin in one position (Min. 6 revolutions) One flying spin (Min. 6 revolutions) One combination spin consisting of all three basic positions and one change of foot (2 per position, min. 5) revolutions per foot) 	<p>One step sequence fully utilizing ice surface</p> <p>(See rule 4105 for remarks)</p>	<p>Skaters must have passed at least the U.S. Figure Skating novice free skate test but may not have passed tests higher than junior free skate test</p>

<p>Senior</p> <p>Ladies: 4:00 +/- 10 sec. Men: 4:30 +/- 10 sec.</p>	<p><i>Maximum of 8 jump elements for men and 7 for ladies:</i></p> <ul style="list-style-type: none"> • Any single jumps. • Must include at least four different double jumps, one must be a double Lutz. • Triple jumps are not permitted • Maximum of 3 jump combinations or sequences • Max. 2 of any same type jump 	<p><i>Maximum of 3 spins of a different nature:</i></p> <ul style="list-style-type: none"> • One spin in one position (Min. 6 revolutions) • One flying spin (Min. 6 revolutions) • One combination spin consisting of all three basic spin positions and one change of foot (2 per position, min. 5 revolutions per foot) 	<p><i>Men:</i> Two different step sequences, one being of advanced difficulty, both fully utilizing the ice surface. (See rule 4105 for remarks)</p> <p><i>Ladies:</i> One step sequence of advanced difficulty, covering the full ice surface and one spiral sequence. (See rule 4104 & 4105 for remarks.)</p>	<p>Skaters must have passed at least the U.S. Figure Skating junior free skate test</p>
---	--	---	---	---

EVENT: COMPULSORY MOVES

General event parameters:

1. Basic Skills – Juvenile: Elements skated on ½ ice
2. Intermediate – Senior: Elements skated on full-ice
3. Elements may be performed only once
4. Music is not allowed

Level	Time	Skating rules/standards
Pre – Preliminary	1:15 max.	<ol style="list-style-type: none">1. Single Toe Loop2. Jump combination: single/single (no Axel)3. Sit spin or camel spin - minimum three revolutions4. Spiral sequence with one forward spiral and one backward spiral (any edge)
Preliminary	1:15 max.	<ol style="list-style-type: none">1. Single Lutz2. Jump combination: single/single (may include Axel)3. Back upright spin - minimum three revolutions4. Forward inside spiral
Pre – Juvenile	1:15 max.	<ol style="list-style-type: none">1. Single jump (may include Axel)2. Jump combination: single/single (may include Axel)3. Layback spin or camel spin - minimum three revolutions4. Step sequence - circular

2015-16 Singles Free Skating Requirements – This chart has been updated with the changes from the U.S. Figure Skating Governing Council with changes that will go into effect July 1, 2015. Junior and Senior events subject to change by the ISU.

2015-16	JUMP ELEMENTS	SPINS	STEP SEQUENCES
<p>NO TEST</p> <p>1:40 maximum</p> <p>*means element is required</p>	<p>Max 5 Jump Elements</p> <ul style="list-style-type: none"> • All single jumps allowed except for the single Axel <ul style="list-style-type: none"> ○ No single Axels, double, triple or quadruple jumps allowed ○ Number of single jumps (except single Axels) is not limited provided the maximum number of jump elements allowed is not exceeded • Max 2 jump combinations or jump sequences <ul style="list-style-type: none"> ○ Jump combinations limited to 2 jumps <u>except that one 3-jump combination with a maximum of 3 single jumps is permitted.</u> ○ Jump sequences limited to a maximum of 3 single jumps ○ <u>Half-loop is considered a listed jump with the value of a single loop when used in a sequence or combination.</u> 	<p>Max 2 Spins</p> <ul style="list-style-type: none"> • Spins may change feet and/or position • Spins may start with a flying entry • Min 3 revs. <p>These spins must be of a different character (For definition see U.S. Figure Skating rule 4103 (E))</p>	<p>Max 1 Sequence</p> <ul style="list-style-type: none"> • Step Sequence <ul style="list-style-type: none"> ○ Must use one-half the ice surface ○ Moves in the field and spiral sequences are permitted but will not be counted as elements ○ Jumps may be included in the step sequence
<p>PRE- PRELIMINARY</p> <p>1:40 maximum</p> <p>*means element is required</p>	<p>Max 5 Jump Elements</p> <ul style="list-style-type: none"> • All single jumps, including the single Axel, allowed <ul style="list-style-type: none"> ○ No double, triple or quadruple jumps allowed ○ Axel may be repeated once as a solo jump or part of a jump sequence or jump combination (maximum of 2 single Axels) ○ Number of single jumps is not limited provided the maximum number of jump elements allowed is not exceeded • Max 2 jump combinations or jump sequences <ul style="list-style-type: none"> ○ Jump combinations limited to 2 jumps <u>except that one 3-jump combination with a maximum of 3 single jumps is permitted.</u> ○ Jump sequences limited to a maximum of 3 single jumps ○ <u>Half-loop is considered a listed jump with the value of a single loop when used in a sequence or combination</u> 	<p>Max 2 Spins</p> <ul style="list-style-type: none"> • Spins may change feet and/or position • Spins may start with a flying entry • Min 3 revs. <p>These spins must be of a different character (For definition see U.S. Figure Skating rule 4103 (E))</p>	<p>Max 1 Sequence</p> <ul style="list-style-type: none"> • Step Sequence <ul style="list-style-type: none"> ○ Must use one-half the ice surface ○ Moves in the field and spiral sequences are permitted but will not be counted as elements ○ Jumps may be included in the step sequence
<p>PRELIMINARY</p> <p>1:30 +/- 10 sec</p> <p>*means element is required</p>	<p>Max 5 Jump Elements</p> <ul style="list-style-type: none"> • 1 must be an Axel or a waltz jump-type jump* • All single jumps, including the single Axel, allowed. Only 2 different double jumps may be attempted (limited to double Salchow, double toe loop and double loop) <ul style="list-style-type: none"> ○ Double flip, double Lutz, double Axel, triple and quadruple jumps not allowed ○ An Axel plus up to two different, allowable double jumps may be repeated once (but not more) as solo jumps or part of a jump sequence or jump combination ○ Number of single jumps is not limited provided the maximum number of jump elements allowed is not exceeded • Max 2 jump combinations or sequences <ul style="list-style-type: none"> ○ Jump combinations limited to 2 jumps <u>except that one three jump combination with a maximum of 2 double jumps and 1 single jump permitted</u> ○ Jump sequences limited to a maximum of 3 single or double jumps. ○ <u>Half-loop is considered a listed jump with the value of a single loop when used in a sequence or combination</u> 	<p>Max 2 Spins</p> <ul style="list-style-type: none"> • Spins may change feet and/or position • Spins may start with a flying entry • Min 3 revs. <p>These spins must be of a different character (For definition see U.S. Figure Skating rule 4103 (E))</p>	<p>Max 1 Sequence</p> <ul style="list-style-type: none"> • Step Sequence <ul style="list-style-type: none"> ○ Must use one-half the ice surface ○ Moves in the field and spiral sequences are permitted but will not be counted as elements ○ Jumps may be included in the step sequence
<p>PRE-JUVENILE</p> <p>2:00 +/- 10 sec</p> <p>*means element is required</p>	<p>Max 5 Jump Elements</p> <ul style="list-style-type: none"> • 1 must be an Axel-type jump* • All single and double jumps allowed except for the double Axel <ul style="list-style-type: none"> ○ No triple or quadruple jumps allowed ○ An Axel plus up to 3 different double jumps may be repeated once (but no more) as solo jumps, in jump sequences or in jump combinations ○ Number of single jumps is not limited provided the maximum number of jump elements allowed is not exceeded • Max 2 jump combinations or sequences <ul style="list-style-type: none"> ○ Jump combinations limited to 2 jumps <u>except that one 3-jump combination with a maximum of 2 double jumps and 1 single jump is permitted</u> ○ Jump sequences limited to a maximum of 3 single or double jumps ○ <u>Half-loop is considered a listed jump with the value of a single jump when used in a sequence or combination</u> 	<p>Max 2 Spins</p> <ul style="list-style-type: none"> • 1 spin combination, with or without change of foot* <ul style="list-style-type: none"> ○ May start with a flying entry ○ Min 6 revs • 1 spin with only 1 position* <ul style="list-style-type: none"> ○ No change of foot ○ May start with a flying entry ○ Min 4 revs <p>These spins must be of a different character (For definition see U.S. Figure Skating rule 4103 (E))</p>	<p>Max 1 Sequence</p> <ul style="list-style-type: none"> • Step Sequence <ul style="list-style-type: none"> ○ Must fully utilize the ice surface ○ Moves in the field and spiral sequences are permitted but will not be counted as elements ○ Jumps may be included in the step sequence

2015-16 Singles Free Skating Requirements – This chart has been updated with the changes from the U.S. Figure Skating Governing Council with changes that will go into effect July 1, 2015. Junior and Senior events subject to change by the ISU.

2015-16	JUMP ELEMENTS	SPINS	STEP SEQUENCES
<p>JUVENILE and OPEN JUVENILE</p> <p>2:15 +/- 10 sec</p> <p>*means element is required</p>	<p>Max 5 Jump Elements</p> <ul style="list-style-type: none"> 1 must be an Axel-type jump* All single and double jumps, including the double Axel, allowed <ul style="list-style-type: none"> No triple or quadruple jumps allowed No more than 3 different double jumps may be repeated and, if repeated, at least one attempt must be in a jump combination or a jump sequence No double jump can be repeated more than once Max 2 jump combinations or sequences <ul style="list-style-type: none"> Jump combinations limited to 2 jumps <u>except one may be a 3-jump combination with a max of 2 double jumps and 1 single jump</u> Half loop is considered a listed jump with the value of a single jump when used in a sequence or combination Number of jumps in jump sequence is not limited 	<p>Max 2 Spins</p> <ul style="list-style-type: none"> 1 spin combination; with or without change of foot* <ul style="list-style-type: none"> Min 8 revs Min 2 revs in each position 1 spin with only 1 position; no change of foot* <ul style="list-style-type: none"> Min 5 revs <p>Both spins may start with a flying entry Spins must be of a different character (For definition see U.S. Figure Skating rule 4103 (E))</p>	<p>Max 1 Sequence</p> <ul style="list-style-type: none"> One choreographic step sequence* <ul style="list-style-type: none"> Must fully utilize the ice surface
<p>INTERMEDIATE</p> <p>2:30 +/- 10 sec</p> <p>*means element is required</p>	<p>Max 6 Jump Elements</p> <ul style="list-style-type: none"> 1 must be an Axel-type jump All single, double and triple jumps allowed <ul style="list-style-type: none"> No more than 2 different jumps with 2 ½ or 3 revolutions may be repeated If any double or triple jumps, including double Axel, are repeated, at least one attempt must be part of a jump combination or sequence No double or triple jump can be repeated more than once Max 3 jump combinations or sequences <ul style="list-style-type: none"> Combinations are limited to 2 jumps One 3-jump combination is permitted Number of jumps in jump sequence is not limited 	<p>Max 2 Spins</p> <ul style="list-style-type: none"> 1 spin combination; with or without change of foot* <ul style="list-style-type: none"> Min 8 revs Min 2 revs in each position 1 spin with only 1 position; no change of foot* <ul style="list-style-type: none"> Min 5 revs <p>Both spins may start with a flying entry Spins must be of a different character (For definition see U.S. Figure Skating rule 4103 (E))</p>	<p>Max 1 Sequence</p> <ul style="list-style-type: none"> One choreographic step sequence* <ul style="list-style-type: none"> Must fully utilize the ice surface
<p>NOVICE LADIES</p> <p>3:00 +/- 10 sec</p> <p>*means element is required</p>	<p>Max 6 Jump Elements</p> <ul style="list-style-type: none"> 1 must be an Axel-type jump* All single, double and triple jumps are allowed <ul style="list-style-type: none"> No more than 1 double Axel and 2 different triple jumps may be repeated, and if repeated, at least 1 attempt must be as part of a jump combination or sequence. There is no limit to the number of different double jumps that can be repeated, but no double or triple jump can be included more than twice Max 3 jump combinations or sequences <ul style="list-style-type: none"> Combinations limited to 2 jumps One 3-jump combination is permitted Number of jumps in jump sequence is not limited 	<p>Max 3 Spins</p> <ul style="list-style-type: none"> 1 spin combination; with or without change of foot* <ul style="list-style-type: none"> Min 10 revs Min 2 revs in each position 1 flying spin with no change of foot or position* <ul style="list-style-type: none"> Min 6 revs 3rd spin is option of skater <p>All spins may start with a flying entry Spins must be of a different character (For definition see U.S. Figure Skating rule 4103 (E))</p>	<p>Max 1 Sequence</p> <ul style="list-style-type: none"> One leveled step sequence* <ul style="list-style-type: none"> Must fully utilize the ice surface
<p>NOVICE MEN</p> <p>3:30 +/- 10 sec</p> <p>*means element is required</p>	<p>Max 7 Jump Elements</p> <ul style="list-style-type: none"> 1 must be an Axel-type jump* All single, double and triple jumps are allowed <ul style="list-style-type: none"> No more than 1 double Axel and 2 different triple jumps may be repeated, and if repeated, at least one attempt must be part of a jump combination or sequence. There is no limit to the number of different double jumps that can be repeated, but no double or triple jump can be included more than twice Max 3 jump combinations or sequences <ul style="list-style-type: none"> Combinations limited to 2 jumps One 3-jump combination is permitted Number of jumps in jump sequence is not limited 	<p>Max 3 Spins</p> <ul style="list-style-type: none"> 1 spin combination; with or without change of foot* <ul style="list-style-type: none"> Min 10 revs Min 2 revs in each position 1 flying spin with no change of foot or position* <ul style="list-style-type: none"> Min 6 revs 3rd spin is option of skater <p>All spins may start with a flying entry Spins must be of a different character (For definition see U.S. Figure Skating rule 4103 (E))</p>	<p>Max 1 Sequence</p> <ul style="list-style-type: none"> One leveled step sequence* <ul style="list-style-type: none"> Must fully utilize the ice surface

2015-16 Singles Free Skating Requirements – This chart has been updated with the changes from the U.S. Figure Skating Governing Council with changes that will go into effect July 1, 2015. Junior and Senior events subject to change by the ISU.

2014-15	JUMP ELEMENTS	SPINS	STEP SEQUENCES
<p>JUNIOR LADIES</p> <p>3:30 +/- 10 sec</p> <p>*means element is required</p>	<p>Max 7 Jump Elements</p> <ul style="list-style-type: none"> • 1 must be an Axel-type jump* • Jumps can contain any number of revolutions <ul style="list-style-type: none"> ○ Of all the triples or quads, only 2 can be executed twice <ul style="list-style-type: none"> ▪ If both executions (of the same triple or quad) are as solo jumps, the second of these jumps will receive 70% of its original base value ○ No double jump, including double Axel, can be included more than twice in total as solo jump or part of a combination/sequence • Max 3 jump combinations or sequences <ul style="list-style-type: none"> ○ Combinations limited to 2 jumps ○ One 3-jump combination is permitted ○ Number of jumps in a sequence is not limited 	<p>Max 3 Spins</p> <ul style="list-style-type: none"> • 1 spin combination; with or without change of foot* <ul style="list-style-type: none"> ○ Min 10 revs ○ Min 2 revs in each position • 1 spin with a flying entry* <ul style="list-style-type: none"> ○ Min 6 revs • 1 spin with only 1 position* <ul style="list-style-type: none"> ○ Min 6 revs <p>All spins may change feet and start with a flying entry Spins must be of a different character (For definition see U.S. Figure Skating rule 4103 (E))</p>	<p>Max 1 Sequence</p> <ul style="list-style-type: none"> • One leveled step sequence* <ul style="list-style-type: none"> ○ Must fully utilize the ice surface
<p>JUNIOR MEN</p> <p>4:00 +/- 10 sec</p> <p>*means element is required</p>	<p>Max 8 Jump Elements</p> <ul style="list-style-type: none"> • 1 must be an Axel-type jump* • Jumps can contain any number of revolutions <ul style="list-style-type: none"> ○ Of all the triples or quads, only 2 can be executed twice <ul style="list-style-type: none"> ▪ If both executions (of the same triple or quad) are as solo jumps, the second of these jumps will receive 70% of its original base value ○ No double jump, including double Axel, can be included more than twice in total as solo jump or part of a combination/sequence • Max 3 jump combinations or sequences <ul style="list-style-type: none"> ○ Combinations limited to 2 jumps ○ One 3-jump combination is permitted ○ Number of jumps in a sequence is not limited 	<p>Max 3 Spins</p> <ul style="list-style-type: none"> • 1 spin combination; with or without change of foot* <ul style="list-style-type: none"> ○ Min 10 revs ○ Min 2 revs in each position • 1 spin with a flying entry* <ul style="list-style-type: none"> ○ Min 6 revs • 1 spin with only 1 position* <ul style="list-style-type: none"> ○ Min 6 revs <p>All spins may change feet and start with a flying entry Spins must be of a different character (For definition see U.S. Figure Skating rule 4103 (E))</p>	<p>Max 1 Sequence</p> <ul style="list-style-type: none"> • One leveled step sequence* <ul style="list-style-type: none"> ○ Must fully utilize the ice surface
<p>SENIOR LADIES</p> <p>4:00 +/- 10 sec</p> <p>*means element is required</p>	<p>Max 7 Jump Elements</p> <ul style="list-style-type: none"> • 1 must be an Axel-type jump* • Jumps can contain any number of revolutions <ul style="list-style-type: none"> ○ Of all the triples or quads, only 2 can be executed twice <ul style="list-style-type: none"> ▪ If both executions (of the same triple or quad) are as solo jumps, the second of these jumps will receive 70% of its original base value ○ No double jump, including double Axel, can be included more than twice in total as solo jump or part of a combination/sequence • Max 3 jump combinations or sequences <ul style="list-style-type: none"> ○ Combinations limited to 2 jumps ○ One 3-jump combination is permitted ○ Number of jumps in a sequence is not limited 	<p>Max 3 Spins</p> <ul style="list-style-type: none"> • 1 spin combination; with or without change of foot* <ul style="list-style-type: none"> ○ Min 10 revs ○ Min 2 revs in each position • 1 spin with a flying entry* <ul style="list-style-type: none"> ○ Min 6 revs • 1 spin with only 1 position* <ul style="list-style-type: none"> ○ Min 6 revs <p>All spins may change feet and start with a flying entry Spins must be of a different character (For definition see U.S. Figure Skating rule 4103 (E))</p>	<p>Max 2 Sequences</p> <ul style="list-style-type: none"> • One leveled step sequence* <ul style="list-style-type: none"> ○ Must fully utilize the ice surface • One choreographic sequence* <ul style="list-style-type: none"> ○ Must be clearly visible
<p>SENIOR MEN</p> <p>4:30 +/- 10 sec</p> <p>*means element is required</p>	<p>Max 8 Jump Elements</p> <ul style="list-style-type: none"> • 1 must be an Axel-type jump* • Jumps can contain any number of revolutions <ul style="list-style-type: none"> ○ Of all the triples or quads, only 2 can be executed twice <ul style="list-style-type: none"> ▪ If both executions (of the same triple or quad) are as solo jumps, the second of these jumps will receive 70% of its original base value ○ No double jump, including double Axel, can be included more than twice in total as solo jump or part of a combination/sequence • Max 3 jump combinations or sequences <ul style="list-style-type: none"> ○ Combinations limited to 2 jumps ○ One 3-jump combination is permitted ○ Number of jumps in a sequence is not limited 	<p>Max 3 Spins</p> <ul style="list-style-type: none"> • 1 spin combination; with or without change of foot* <ul style="list-style-type: none"> ○ Min 10 revs ○ Min 2 revs in each position • 1 spin with a flying entry* <ul style="list-style-type: none"> ○ Min 6 revs • 1 spin with only 1 position* <ul style="list-style-type: none"> ○ Min 6 revs <p>All spins may change feet and start with a flying entry Spins must be of a different character (For definition see U.S. Figure Skating rule 4103 (E))</p>	<p>Max 2 Sequences</p> <ul style="list-style-type: none"> • One leveled step sequence* <ul style="list-style-type: none"> ○ Must fully utilize the ice surface • One choreographic sequence* <ul style="list-style-type: none"> ○ Must be clearly visible

This chart highlights the elements in each program. It is not meant to replace the reading of the rules in the current version of the U.S. Figure Skating Rulebook. Should this chart disagree with the current U.S. Figure Skating Rulebook in any aspect, the rulebook takes precedence. **Singles 2015-16 FS Elements Version 1.0 – 6/4/15 AB**

2015-16 Singles Short Program Requirements – This chart has been updated with changes from the U.S. Figure Skating Governing Council that will go into effect July 1, 2015. Junior and senior events are subject to change by the ISU.



<p>INTERMEDIATE LADIES/MEN</p> <p>2:00 max. (See USFS Rule 4230)</p>	<p>Single or Double Axel</p>	<p>Double or Triple Jump</p> <p>Immediately preceded by connecting steps</p> <p>May not repeat double Axel or <u>the triple jump used in the combination</u></p>	<p>Jump Combination</p> <p>Single/Double, Double/Double, Single/Triple, or Double/Triple</p> <p>May not repeat Axel jump or solo jump performed</p>	<p>Spin</p> <p>Only one position No change of foot May start with a fly Min. 5 revs.</p>		<p>Spin Combination</p> <p>With only 1 change of foot and min. 1 change of position Min. 2 different basic positions with at least 2 revs. each No flying entry Min. 5 revs. each foot</p>	<p>Choreographic Step Sequence</p> <p>Fully utilizing the ice surface</p>
<p>NOVICE LADIES</p> <p>2:30 max. (See USFS Rule 4220)</p>	<p>Single or Double Axel</p>	<p>Double or Triple Jump</p> <p>Immediately preceded by connecting steps</p> <p>May not repeat double Axel or either jump in combo</p>	<p>Jump Combination</p> <p>Double/Double, Double/Triple or <u>Triple/Triple</u></p> <p>May not repeat double Axel or solo jump performed</p>	<p>Layback or Sideways Leaning Spin</p> <p>No change of foot No flying entry Min. 6 revs.</p>		<p>Spin Combination</p> <p>With only 1 change of foot and min. 1 change of position Min. 2 different basic positions with at least 2 revs. each No flying entry Min. 5 revs. each foot</p>	<p>Leveled Step Sequence</p> <p>Fully utilizing the ice surface</p>
<p>NOVICE MEN</p> <p>2:30 max. (See USFS Rule 4220)</p>	<p>Single or Double Axel</p>	<p>Double or Triple Jump</p> <p>Immediately preceded by connecting steps</p> <p>May not repeat double Axel or either jump in combo</p>	<p>Jump Combination</p> <p>Double/Double, Double/Triple or <u>Triple/Triple</u></p> <p>May not repeat Double Axel or solo jump performed</p>	<p>Camel or Sit Spin</p> <p>With only 1 change of foot No change of position No flying entry Min. 5 revs. each foot</p>		<p>Spin Combination</p> <p>With only 1 change of foot and min. 1 change of position Min. 2 different basic positions with at least 2 revs. each No flying entry Min. 5 revs. each foot</p>	<p>Leveled Step Sequence</p> <p>Fully utilizing the ice surface</p>
<p>JUNIOR LADIES</p> <p>2:50 max. (See USFS Rule 4210)</p>	<p>Double Axel</p>	<p>Double or Triple Flip</p> <p>Immediately preceded by connecting steps or other free skating movements</p>	<p>Jump Combination</p> <p>Double/Double, Double/Triple or Triple/Triple</p> <p>May not repeat Double Axel or solo jump performed</p>	<p>Flying Sit Spin</p> <p>Sit position must be attained in the air. Min. 8 revs.</p>	<p>Layback or Sideways Leaning Spin</p> <p>No flying entry Min. 8 revs.</p>	<p>Spin Combination</p> <p>With only 1 change of foot and min. 1 change of position Min. 2 different basic positions with at least 2 revs. each No flying entry Min. 6 revs. each foot</p>	<p>Leveled Step Sequence</p> <p>Fully utilizing the ice surface</p>
<p>JUNIOR MEN</p> <p>2:50 max. (See USFS Rule 4210)</p>	<p>Double or Triple Axel</p>	<p>Double or Triple Flip</p> <p>Immediately preceded by connecting steps or other free skating movements</p>	<p>Jump Combination</p> <p>Double/Triple or Triple/Triple</p> <p>May not repeat Axel jump or solo jump performed</p>	<p>Flying Sit Spin</p> <p>Sit position must be attained in the air. Min. 8 revs.</p>	<p>Camel Spin</p> <p>With only 1 change of foot No flying entry Min. 6 revs. each foot</p>	<p>Spin Combination</p> <p>With only 1 change of foot and min. 1 change of position Min. 2 different basic positions with at least 2 revs. each No flying entry Min. 6 revs. each foot</p>	<p>Leveled Step Sequence</p> <p>Fully utilizing the ice surface</p>
<p>SENIOR LADIES</p> <p>2:50 max. (See USFS Rule 4200)</p>	<p>Double or Triple Axel</p>	<p>Any Triple Jump</p> <p>Immediately preceded by connecting steps or other free skating movements</p> <p>May not repeat Triple Axel or either jump in combo</p>	<p>Jump Combination</p> <p>Double/Triple or Triple/Triple</p> <p>May not repeat Axel jump or solo jump performed</p>	<p>Flying Spin</p> <p>Landing position different than layback/sideways leaning spin Min. 8 revs.</p>	<p>Layback or Sideways Leaning Spin</p> <p>No flying entry Min. 8 revs.</p>	<p>Spin Combination</p> <p>With only 1 change of foot and min. 1 change of position Min. 2 different basic positions with at least 2 revs. each No flying entry Min. 6 revs. each foot</p>	<p>Leveled Step Sequence</p> <p>Fully utilizing the ice surface</p>
<p>SENIOR MEN</p> <p>2:50 max. (See USFS Rule 4200)</p>	<p>Double or Triple Axel</p>	<p>Any Triple or Quadruple Jump</p> <p>Immediately preceded by connecting steps or other free skating movements</p> <p>May not repeat Triple Axel or either jump in combo</p>	<p>Jump Combination</p> <p>Double/Triple, Triple/Triple, Quad/Double, or Quad/Triple</p> <p>May not repeat Axel jump or solo jump performed</p>	<p>Flying Spin</p> <p>Landing position different than spin in 1 position Min. 8 revs.</p>	<p>Camel or Sit Spin</p> <p>With only 1 change of foot No flying entry Min. 6 revs. each foot</p>	<p>Spin Combination</p> <p>With only 1 change of foot and min. 1 change of position Min. 2 different basic positions with at least 2 revs. each No flying entry Min. 6 revs. each foot</p>	<p>Leveled Step Sequence</p> <p>Fully utilizing the ice surface</p>

2015-16 Adult Singles Free Skating Requirements – This chart has been updated with the changes from the U.S. Figure Skating Governing Council with changes that will go into effect July 1, 2015.



2015-16	JUMP ELEMENTS	SPINS	STEP SEQUENCE
<p>ADULT GOLD</p> <p>2:40 maximum * means element is required</p>	<p>Max 5 Jump Elements</p> <ul style="list-style-type: none"> • Min 1*, max 3 combinations or sequences • 1 jump combination/sequence may contain three jumps; the remaining jump combinations/sequences are limited to two jumps • Each jump may be repeated only once, and only as part of combination or sequence • All single jumps, including an Axel-type jump, are permitted, as are the following double jumps: double toe loop, double Salchow. • No double-double jump combinations or sequences are permitted • Double loop, double flip, double Lutz, double Axel and triple jumps are not permitted 	<p>Max 3 Spins</p> <ul style="list-style-type: none"> • Spins must be of different character (for definition, see U.S. Figure Skating rule 4103 (E)) • Min 4 revs total if no change of foot • Min 4 revs each foot if change of foot • Min 2 revs in each position 	<p>Max 1 Step Sequence</p> <ul style="list-style-type: none"> • 1 choreographic step sequence, <u>fully utilizing the ice surface (may include moves in the field and spirals.)</u> • Additional moves in the field, spiral and step sequences will not be counted as elements but will be counted as transitions and marked as such.
<p>ADULT SILVER</p> <p>2:10 maximum * means element is required</p>	<p>Max 5 Jump Elements</p> <ul style="list-style-type: none"> • Min 1*, max 2 combinations or sequences • 1 combination/sequence may consist of three jumps, and the other may have only two jumps • Additional jump sequences which contain non-listed jumps of not more than one revolution performed as part of connecting footwork preceding single jumps are permitted • Each jump may be repeated only once, and only as part of a combination or sequence (maximum of 2 of any jump) • All single jumps are permitted, including an Axel-type jump. • No double or triple jumps are permitted 	<p>Max 2 Spins</p> <ul style="list-style-type: none"> • Spins must be of different character (for definition, see U.S. Figure Skating rule 4103 (E)) • Min 3 revs total if no change of foot • Min 3 revs each foot if change of foot • Min 2 revs in each position 	<p>Max 1 Sequence</p> <p>To be chosen from:</p> <ul style="list-style-type: none"> • Step sequence or • Spiral sequence (any pattern) <p>Must use at least ½ ice surface</p> <p>Additional moves in the field, spiral and step sequences will not be counted as elements but will be counted as transitions and marked as such.</p>

This chart highlights the elements in each program. It is not meant to replace the reading of the rules in the current version of the U.S. Figure Skating Rulebook. Should this chart disagree with the current U.S. Figure Skating Rulebook in any aspect, the rulebook takes precedence.

Spins of a different character – this refers to the abbreviation of a spin, e.g. a combination spin with a change of foot (CCoSp) and a combination with no change of foot (CoSp) are spins of a different character; and a flying sit spin (FSSp) and a sit spin (SSp) are of a different character. For more information, see U.S. Figure Skating rule 4103 (E).

6.0 System Penalties:

- 0.1 in each mark for each illegal element
- 0.1 in 1st mark for insufficient revs.
- 0.2 in 1st mark for each jump and/or spin element exceeding max.
- 0.1 in each mark for time violation
- 0.1 in 1st mark for step seq. not utilizing the ice as prescribed.
- 0.2 in 1st mark if a required element is omitted

NOTE: All times are MAXIMUM times. There is no +/- 10 second leeway for adult programs. All programs – IJS and 6.0 -- over the maximum time will receive a deduction.



2015-16	JUMP ELEMENTS	SPINS	STEP/SPIRAL SEQUENCES
<p>ADULT BRONZE</p> <p>1:50 maximum * means element is required</p>	<p>Max 4 Jump Elements</p> <ul style="list-style-type: none"> • Min 1*, max 2 combinations or sequences; • 1 combination/sequence may consist of three jumps, and the other may have only two jumps • Each jump may be repeated only once, and only as part of a combination or sequence (maximum of 2 of any jump) • All single jumps are permitted (except Axel) • No Axel, double or triple jumps are permitted 	<p>Max 2 Spins</p> <ul style="list-style-type: none"> • Spins must be of different character (for definition, see U.S. Figure Skating rule 4103 (E)) • Min 3 revs total if no change of foot • Min 3 revs each foot if change of foot • Min 2 revs in each position • No flying spins are permitted 	<p>Max 1 Sequence</p> <p>To be chosen from:</p> <ul style="list-style-type: none"> • Step sequence or • Spiral sequence (any pattern) <p>Must use at least ½ ice surface</p> <p>Additional moves in the field, spiral and step sequences will not be counted as elements but will be counted as transitions and marked as such.</p>
<p>ADULT PRE BRONZE</p> <p>1:40 maximum * means element is required</p>	<p>Max 4 Jump Elements</p> <ul style="list-style-type: none"> • Jump combinations and sequences are optional, but no more than 2 combinations or sequences may be included • 1 jump combination/sequence may consist of three jumps, and the other may have only two jumps. • Each jump may be repeated only once and only as part of a combination or sequence (maximum of 2 of any jump) • Only single and half-revolution jumps are allowed • No Lutz, Axel or double jumps are allowed 	<p>Max 2 Spins</p> <ul style="list-style-type: none"> • Min 3 revs • Spins with a flying entry are not permitted 	<p>Max 1 Sequence</p> <ul style="list-style-type: none"> • Connecting steps throughout the program are required

This chart highlights the elements in each program. It is not meant to replace the reading of the rules in the current version of the U.S. Figure Skating Rulebook. Should this chart disagree with the current U.S. Figure Skating Rulebook in any aspect, the rulebook takes precedence.

Spins of a different character – this refers to the abbreviation of a spin, e.g. a combination spin with a change of foot (CCoSp) and a combination with no change of foot (CoSp) are spins of a different character; and a flying sit spin (FSSp) and a sit spin (SSp) are of a different character. For more information, see U.S. Figure Skating rule 4103 (E).

6.0 System Penalties:

- 0.1 in each mark for each illegal element
- 0.1 in each mark for time violation
- 0.1 in 1st mark for insufficient revs.
- 0.1 in 1st mark for step seq. not utilizing the ice as prescribed.
- 0.2 in 1st mark for each jump and/or spin element exceeding max.
- 0.2 in 1st mark if a required element is omitted

NOTE: All times are MAXIMUM times. There is no +/- 10 second leeway for adult programs. All programs – IJS and 6.0 -- over the maximum time will receive a deduction.



U.S. Figure Skating Nonqualifying Competitions

EVENT: Spins Challenge

General event parameters:

1. Spins may be skated in any order. Connecting steps are allowed, but will not be taken into consideration in scoring. Spins may not be repeated. On required elements may be included.
2. All events are skated on ½ ice.
3. Minimum number of revolutions are noted in parentheses.

Level	Time	Skating rules / standards
Pre – Preliminary	1:30 max.	<ol style="list-style-type: none">1. Upright one-foot spin (3)2. Upright back scratch spin (3)3. Sit spin (3)
Preliminary	1:30 max.	<ol style="list-style-type: none">1. Forward scratch to back scratch spin (3)2. Combination spin with no of foot (4)3. Sit spin (3)
Pre – Juvenile	1:30 max.	<ol style="list-style-type: none">1. Camel spin (3)2. Combination spin – camel to sit spin; no change of foot (6)3. Forward to backward scratch spin (3 per foot)
Juvenile & Open Juv.	1:30 max.	<ol style="list-style-type: none">1. Sit spin (4)2. Combination spin – change of foot; optional change of position (4 per foot)3. Girls – layback spin (4); Boys – camel spin (4)
Intermediate	1:30 max.	<ol style="list-style-type: none">1. Flying camel spin (5)2. Sit spin to backward sit spin (4 per foot)3. Combination spin – change of foot & change of position (4 per foot)
Novice	1:30 max.	<ol style="list-style-type: none">1. Choice of camel, sit or layback spin (6)2. Camel spin to backward camel spin (4 per foot in position)3. Combination spin – change of foot & two changes of position (2 per position & 5 per foot)
Junior	1:30 max.	<ol style="list-style-type: none">1. Flying sit spin or flying reverse sit spin (6)2. Ladies – layback spin (6); men – cross-foot spin (6)3. Combination spin – with change of foot & utilizing all three positions (2 per position & 5 per foot)
Senior	1:30 max.	<ol style="list-style-type: none">1. Flying spin of choice (6)2. Solo spin of choice (6) – may not fly3. Combination spin – with change of foot & utilizing all three positions (2 per position & 5 per foot)

Sanction #20538 - This event is a standard U.S. Figure Skating Nonqualifying Competition



Sanctioned by Skate Canada





U.S. Figure Skating Nonqualifying Competitions

EVENT: Jumps Challenge

General event parameters:

1. Each jump may be attempted twice; the best attempt will be counted.
2. Pre-juvenile and lower will be skated $\frac{1}{2}$ ice; Juvenile – senior will be skated on full ice
3. Jumps with an “*” must be preceded with connecting steps (intermediate – senior)

Level	Time	Skating rules / standards
Beginner	1:15 max.	<ol style="list-style-type: none">1. Waltz jump (from backward crossovers)2. $\frac{1}{2}$ flip or $\frac{1}{2}$ Lutz3. Single Salchow
High Beginner	1:15 max.	<ol style="list-style-type: none">1. Waltz jump (from backward crossovers)2. Single Salchow3. Jump combination – waltz jump-toe loop
No-Test	1:15 max.	<ol style="list-style-type: none">1. Single toe loop2. Single loop3. Jump combination – Any two $\frac{1}{2}$ or single revolution jumps (no Axel)
Pre – Preliminary	1:15 max.	<ol style="list-style-type: none">1. Single toe loop2. Single flip3. Jump combination - Any two $\frac{1}{2}$ or single revolution jumps (no Axel)
Preliminary	1:15 max.	<ol style="list-style-type: none">1. Single flip2. Single Lutz3. Jump combination – Any single jump + single loop (may be Axel)
Pre – Juvenile	1:15 max.	<ol style="list-style-type: none">1. Single Axel2. Single or double jump3. Jump combination – single/single (no Axel)
Juvenile & Open Juv.	1:15 max.	<ol style="list-style-type: none">1. Single Axel2. Double Salchow3. Jump combination – single/single or double/single (no Axel)
Intermediate	1:15 max.	<ol style="list-style-type: none">1. Single Axel2. Double loop*3. Jump combination – double/single (no Axel)
Novice	1:15 max.	<ol style="list-style-type: none">1. Double loop2. Double flip*3. Jump combination – double/double (may be double Axel)
Junior	1:15 max.	<ol style="list-style-type: none">1. Choice of double or triple jump2. Double or triple flip*3. Jump combination – double/double (may be double Axel)
Senior	1:15 max.	<ol style="list-style-type: none">1. Choice of double or triple jump2. Double or triple Lutz*3. Jump combination – double/double or triple/double (may be double Axel)

Sanction #20538 - This event is a standard U.S. Figure Skating Nonqualifying Competition



Sanctioned by Skate Canada





U.S. Figure Skating Nonqualifying Competitions

EVENT: Showcase Events – Light Entertainment Events

Format:

- Showcase program that should express a carefree concept or storyline designed to uplift and entertain the audience through related skating movements, gestures and physical actions.
- Props and Scenery are permitted. The skater is responsible for transporting the props on and off the ice. Thirty seconds will be allowed for this. Props will not be allowed on the warm-up.

General event parameters:

1. Level will be determined by the highest free skate or dance (solo or partnered) test passed. Skaters may compete at the highest level they have passed, or skate up to one level higher.
2. The determination of level will be based upon test requirement at the entry deadline
3. Current guidelines and procedures for nonqualifying showcase competitions can be found at www.usfigureskating.org, under "Programs" on the National Showcase page.
4. Skaters placing fourth and higher in Preliminary and higher artistic/showcase solo events including adult events, may be qualified to enter the next National Showcase. For more information, contact Melissa Bowman, National Vice Chair for National Showcase, at patinage.tx@gmail.com.

	Event	Must have passed(dance tests refer to solo or partnered standard track)	Must not have passed(dance tests refer to solo or partnered standard track)	Age	Time
Singles	Pre-Preliminary* Note: this level does not qualify for National Showcase	-	Preliminary Free Skate	No Age restriction	1:30 max
	Preliminary	Preliminary Free Skate	Pre-Juvenile Free Skate	No minimum age (max age 20)	1:40 max
	Pre Juvenile	Pre Juvenile Free Skate 2 Preliminary Dances	Juvenile Free Skate or Complete Pre-Bronze Dance	No minimum age (max age 20)	1:40 max
	Juvenile	Juvenile Free Skate Complete Preliminary Dance	Intermediate Free Skate Any Silver Dance	13 and under	2:10 max

Sanction #20538 - This event is a standard U.S. Figure Skating Nonqualifying Competition



Sanctioned by Skate Canada



	Intermediate	Intermediate Free Skate Complete Bronze Dance	Novice Free Skate Any Gold Dance	17 and under	2:10 max
	Novice	Novice Free Skate One Silver Dance	Junior Free Skate Any Gold Dance	No age restriction	2:10 max
	Junior	Junior Free Skate Two Pre-Gold Dances	Senior Free Skate Completed Gold Dance	No age restriction	2:40 max
	Senior	Senior Free Skate Complete Gold Dance		No age restriction	2:40 max
	Event	Must meet requirements for*	Must not have passed	Age	Time
	Adult Bronze	Adult Bronze Free Skate or Pairs Events or have passed the complete Pre-Bronze Dance Test	Any Pre-Silver Dance Test	21 and older	1:40 max
	Adult Silver	Adult Silver Free Skate or Pairs Events or have passed one Pre- Silver Dance Test	Any Pre-Gold Dance Test	21 and older	1:40 max
	Adult Gold	Adult Gold Free Skate or any Masters Pairs event or have passed one Pre-Gold Dance Test	Complete Pre- Gold Dance Test	21 and older	1:40 max

**The determination of level will be based upon test requirements at the entry deadline. For the U.S. Adult Championships and adult sectional championships, skaters must meet the test requirements for the level at which they want to compete, and rules 2540-2552 apply. For all other competitions, skaters must compete at their test level or one level higher, per the above chart.*

Sanction #20538 - This event is a standard U.S. Figure Skating Nonqualifying Competition



Sanctioned by Skate Canada





Falling Leaves Classic – Entry Form
October 3, 2015
Sanction #20538

Hosted by the Skating Club of Novi
 Online registration is available at www.sk8stuff.com

Name:		U.S. Figure Skating #	
Date of Birth:		Sex:	
Address:			
Email:			
Cell phone:			
Name of parent or guardian:			
Highest MITF test:		Highest free skate test:	
Highest dance test:		Highest pairs test:	
Home figure skating club:			
Coach name:		Coach U.S. Figure Skating#	
Coach email:		Coach cell phone:	

Please mark an “X” in the box next to events you are entering. The entry fee is \$80 for the first event, and \$40 for each additional event.

FREE SKATE EVENTS:

Introductory	X	Test Track	X	Well Balanced	X
Beginner		Pre-Preliminary			
High Beginner		Preliminary		Pre-Preliminary	
No Test		Pre-Juvenile		Preliminary	
		Juvenile		Pre-Juvenile	
Adult	X	Intermediate		Open Juvenile	
Pre-Bronze		Novice		Juvenile	
Bronze		Junior		Intermediate	
Silver		Senior		Novice	
Gold				Junior	
				Senior	

Sanction #20538 - This event is a standard U.S. Figure Skating Nonqualifying Competition



Sanctioned by Skate Canada



Short Program	X	Compulsory Moves	X	Jumps Challenge	X
Intermediate		Beginner		Beginner	
Novice		High Beginner		High Beginner	
Junior		No Test		No Test	
Senior		Pre-Preliminary		Pre-Preliminary	
		Preliminary		Preliminary	
		Pre-Juvenile		Pre-Juvenile	
				Juvenile	
				Open Juvenile	
				Intermediate	
				Novice	
				Junior	
				Senior	

Spins Challenge	X	Showcase – Light Entertainment	X
Pre-Preliminary		Pre-Preliminary	
Preliminary		Preliminary	
Pre-Juvenile		Pre-Juvenile	
Juvenile		Juvenile	
Open Juvenile		Intermediate	
Intermediate		Novice	
Novice		Junior	
Junior		Senior	
Senior		Adult Bronze	
		Adult Silver	
		Adult Gold	

Competition Fees:

First Event (\$80) \$ _____
 Additional Event (\$40) \$ _____
 Additional Event (\$40) \$ _____
 Practice Ice (\$12) \$ _____
Total Fees Included \$ _____

The completed entry form, with fees, must be postmarked no later than September 9, 2015.

Make check or money order payable to **Skating Club of Novi** and mail to:

Falling Leaves Classic
c/o Jeff Curley
4665 Driftwood Drive
Commerce Township, MI 48382

Sanction #20538 - This event is a standard U.S. Figure Skating Nonqualifying Competition



Sanctioned by Skate Canada



ENTRY FEES ARE NOT REFUNDABLE AFTER THE ENTRY DEADLINE UNLESS AN EVENT IS CANCELED, INCLUDING MEDICAL.

Certification of Competitor: The Competitor is eligible to enter the events checked. It is agreed that the competitor and family holds the Skating Club of Novi or Novi Ice Arena harmless from any and all liability either during practice or the competition, and from any and all liability for damages to or loss of property.

Instructor/coach has verified that the skater/team is entered in the correct level.

The Program Director/Club Officer has verified that the skater/team is in good standing.

Parent/Guardian Signature _____ **Date** _____

Competitor Signature _____ **Date** _____

Instructor/Coach Signature _____ **Date** _____

Program Director/Club Officer _____ **Date** _____

Office Use: Check # _____ Date Arrived: _____

Sanction #20538 - This event is a standard U.S. Figure Skating Nonqualifying Competition



Sanctioned by Skate Canada

